

KLHL2 RABBIT PAB

Cat.#: S217563

Product Name: Anti-KLHL2 Rabbit Polyclonal Antibody

Synonyms: MAV; MAYVEN; ABP-KELCH

UNIPROT ID: O95198 (Gene Accession - BC036468)

Background: KLHL2 (kelch-like protein 2), also known as actin-binding protein Mayven, is a 593 amino acid actin-binding protein. Highly expressed in brain, KLHL2 is thought to play a role in the organization of the actin cytoskeleton in brain cells.

Immunogen: Fusion protein of human KLHL2

Applications: ELISA, IHC

Recommended Dilutions: IHC: 25-100; ELISA: 1000-2000

Host Species: Rabbit

Clonality: Rabbit Polyclonal

Isotype: Immunogen-specific rabbit IgG

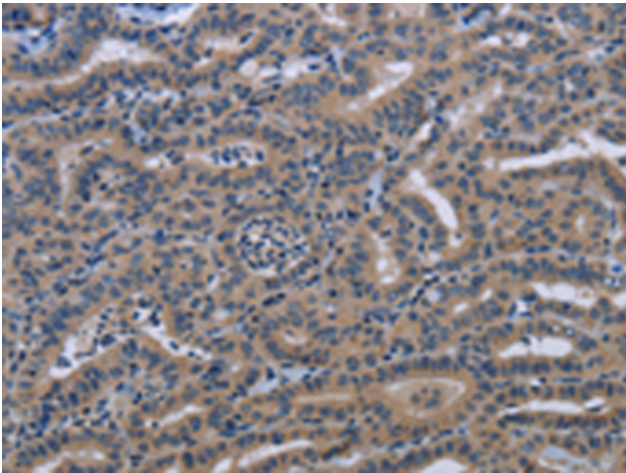
Purification: Antigen affinity purification

Species Reactivity: Human, Mouse, Rat

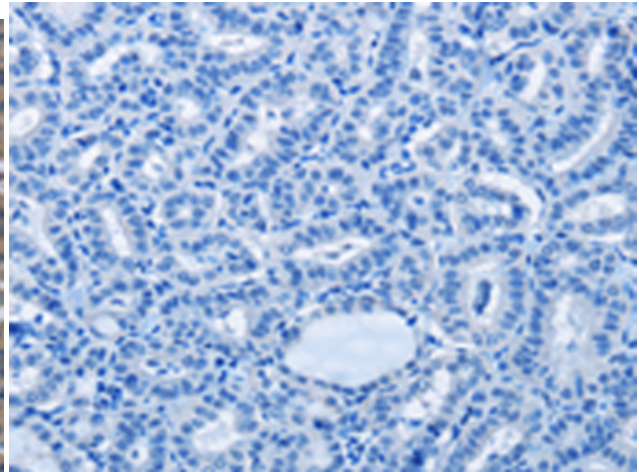
Constituents: PBS (without Mg²⁺ and Ca²⁺), pH 7.4, 150 mM NaCl, 0.05% Sodium Azide and 40% glycerol

Research Areas: Signal Transduction

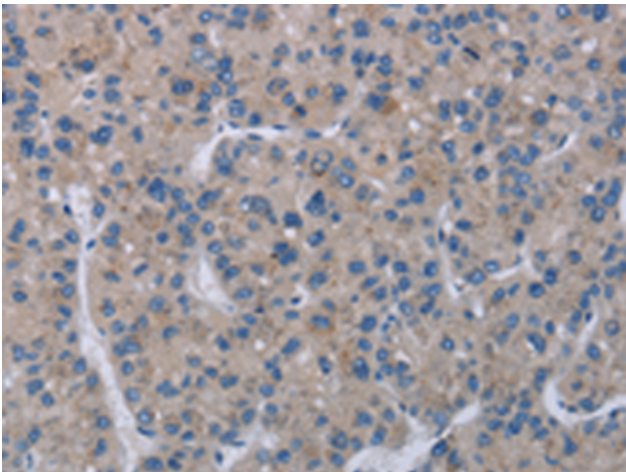
Storage & Shipping: Store at -20°C. Avoid repeated freezing and thawing



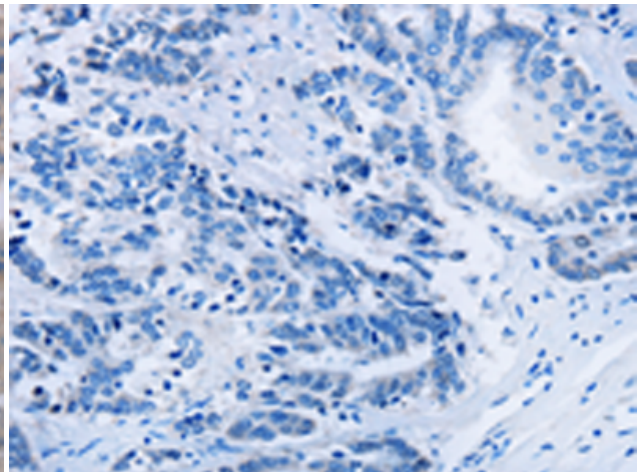
Immunohistochemistry analysis of paraffin embedded Human thyroid cancer tissue using 217563(KLHL2 Antibody) at a dilution of 1/20(Cytoplasm).



In comparison with the IHC on the left, the same paraffin-embedded Human thyroid cancer tissue is first treated with the fusion protein and then with 217563(Anti-KLHL2 Antibody) at dilution 1/20.



The image on the left is immunohistochemistry of paraffin-embedded Human liver cancer tissue using 217563(Anti-KLHL2 Antibody) at a dilution of 1/20.



In comparison with the IHC on the left, the same paraffin-embedded Human liver cancer tissue is first treated with fusion protein and then with D222590(Anti-KLHL2 Antibody) at dilution 1/20.