

KLHL22 RABBIT PAB

Cat.#: S222421

Product Name: Anti-KLHL22 Rabbit Polyclonal Antibody

Synonyms: KELCHL

UNIPROT ID: Q53GT1 (Gene Accession - NP_116164)

Background: Enables 14-3-3 protein binding activity. Involved in several processes, including cellular protein metabolic process; cellular response to leucine; and mitotic spindle assembly checkpoint signaling. Located in several cellular components, including cytosol; intercellular bridge; and microtubule cytoskeleton. Part of Cul3-RING ubiquitin ligase complex. Colocalizes with lysosome and nucleus.

Immunogen: Synthetic peptide of human KLHL22

Applications: ELISA, IHC

Recommended Dilutions: IHC: 50-200; ELISA: 5000-10000

Host Species: Rabbit

Clonality: Rabbit Polyclonal

Isotype: Immunogen-specific rabbit IgG

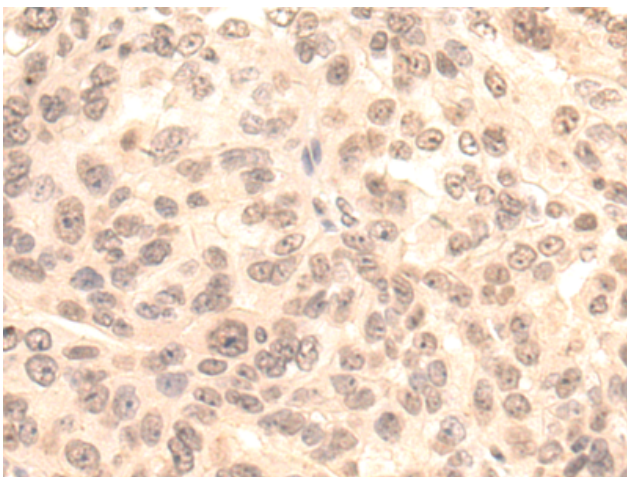
Purification: Antigen affinity purification

Species Reactivity: Human, Mouse, Rat

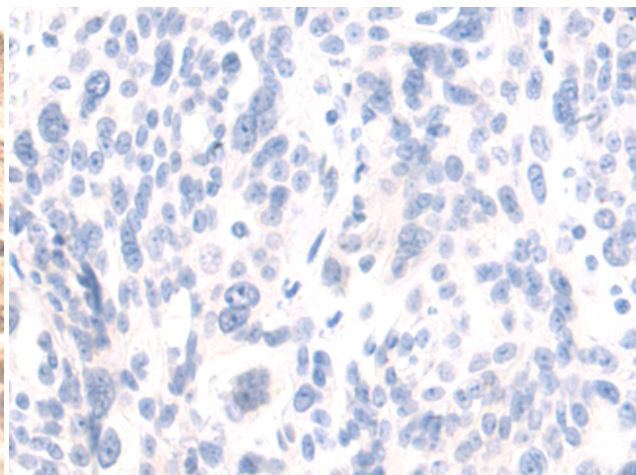
Constituents: PBS (without Mg²⁺ and Ca²⁺), pH 7.4, 150 mM NaCl, 0.05% Sodium Azide and 40% glycerol

Research Areas: Metabolism, Cell Biology

Storage & Shipping: Store at -20°C. Avoid repeated freezing and thawing



Immunohistochemistry analysis of paraffin embedded Human breast cancer tissue using 222421(KLHL22 Antibody) at a dilution of 1/50(Cytoplasm and Nucleus).



In comparison with the IHC on the left, the same paraffin-embedded Human breast cancer tissue is first treated with the synthetic peptide and then with 222421(Anti-KLHL22 Antibody) at dilution 1/50.