

KLHL36 RABBIT PAB

Cat.#: S215406

Product Name: Anti-KLHL36 Rabbit Polyclonal Antibody

Synonyms: C16orf44

UNIPROT ID: Q8N4N3 (Gene Accession - NP_079007)

Background: Probable substrate-specific adapter of an E3 ubiquitin-protein ligase complex which mediates the ubiquitination and subsequent proteasomal degradation of target proteins.

Immunogen: Synthetic peptide of human KLHL36

Applications: ELISA, IHC

Recommended Dilutions: IHC: 40-200; ELISA: 5000-10000

Host Species: Rabbit

Clonality: Rabbit Polyclonal

Isotype: Immunogen-specific rabbit IgG

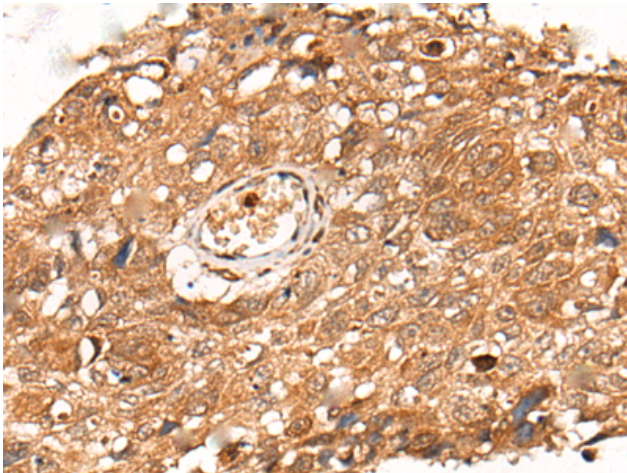
Purification: Antigen affinity purification

Species Reactivity: Human, Mouse, Rat

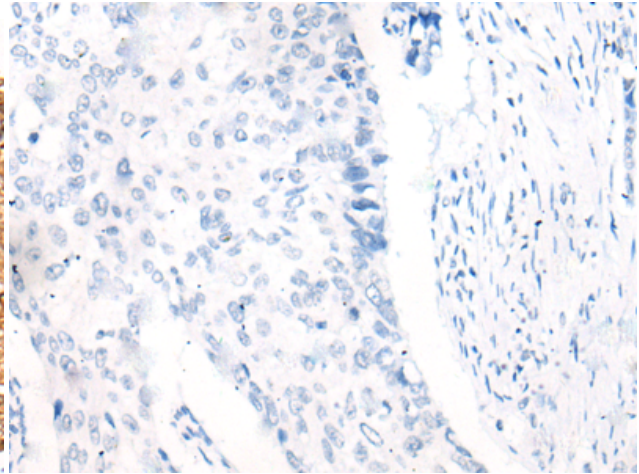
Constituents: PBS (without Mg²⁺ and Ca²⁺), pH 7.4, 150 mM NaCl, 0.05% Sodium Azide and 40% glycerol

Research Areas: Cell Biology

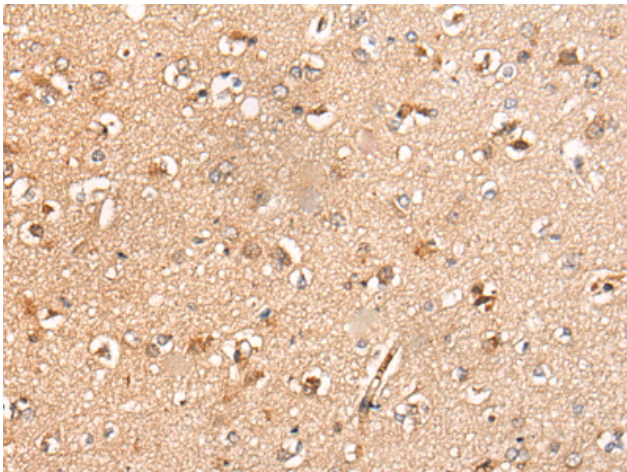
Storage & Shipping: Store at -20°C. Avoid repeated freezing and thawing



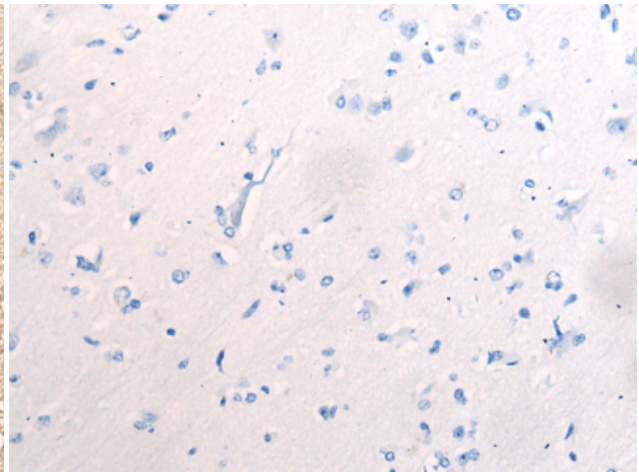
Immunohistochemistry analysis of paraffin embedded Human lung cancer tissue using 215406(KLHL36 Antibody) at a dilution of 1/55(Nucleus and Cytoplasm).



In comparison with the IHC on the left, the same paraffin-embedded Human lung cancer tissue is first treated with the synthetic peptide and then with 215406(Anti-KLHL36 Antibody) at dilution 1/55.



The image on the left is immunohistochemistry of paraffin-embedded Human brain tissue using 215406(Anti-KLHL36 Antibody) at a dilution of 1/55.



In comparison with the IHC on the left, the same paraffin-embedded Human brain tissue is first treated with synthetic peptide and then with D163331(Anti-KLHL36 Antibody) at dilution 1/55.