

## KLK11 RABBIT PAB

**Cat.#:** S217565

**Product Name:** Anti-KLK11 Rabbit Polyclonal Antibody

**Synonyms:** TLSP; PRSS20

**UNIPROT ID:** Q9UBX7 (Gene Accession - BC022068 )

**Background:** Kallikreins are a subgroup of serine proteases having diverse physiological functions. Growing evidence suggests that many kallikreins are implicated in carcinogenesis and some have potential as novel cancer and other disease biomarkers. This gene is one of the fifteen kallikrein subfamily members located in a cluster on chromosome 19. Alternate splicing of this gene results in multiple transcript variants encoding distinct isoforms which are differentially expressed.

**Immunogen:** Fusion protein of human KLK11

**Applications:** ELISA, IHC

**Recommended Dilutions:** IHC: 100-300; ELISA: 2000-10000

**Host Species:** Rabbit

**Clonality:** Rabbit Polyclonal

**Isotype:** Immunogen-specific rabbit IgG

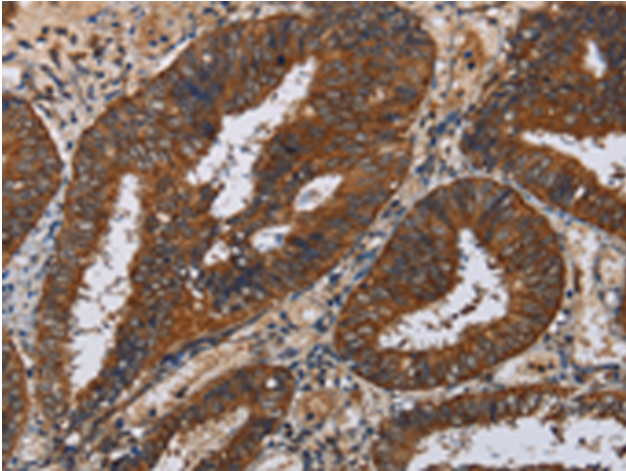
**Purification:** Antigen affinity purification

**Species Reactivity:** Human

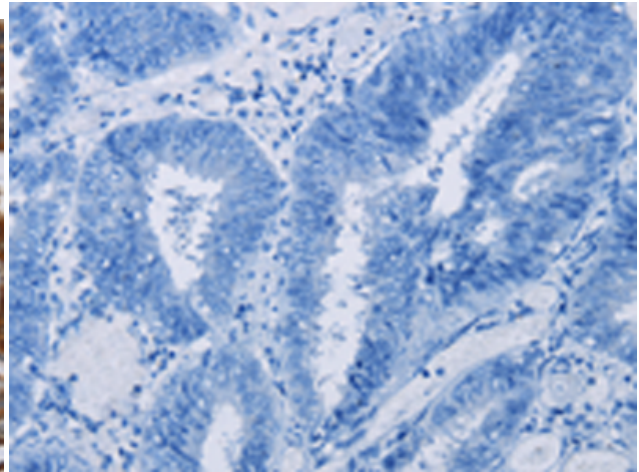
**Constituents:** PBS (without Mg<sup>2+</sup> and Ca<sup>2+</sup>), pH 7.4, 150 mM NaCl, 0.05% Sodium Azide and 40% glycerol

**Research Areas:** Signal Transduction, Cell Biology

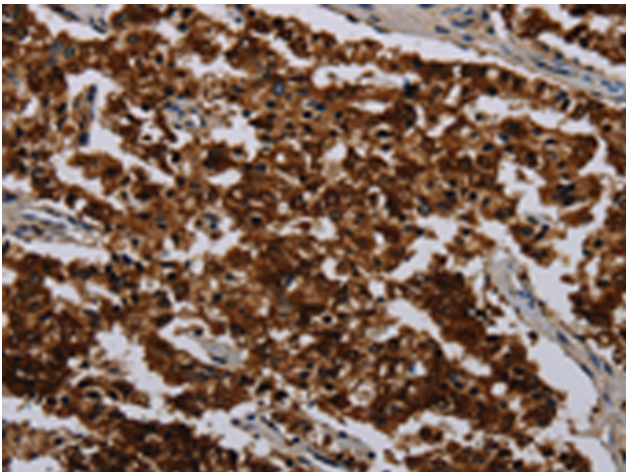
**Storage & Shipping:** Store at -20°C. Avoid repeated freezing and thawing



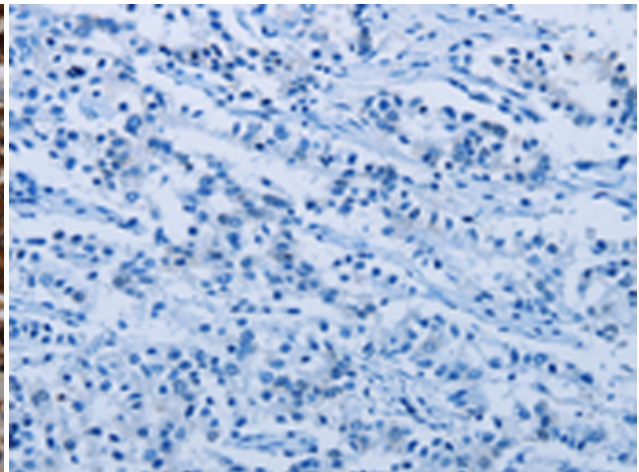
Immunohistochemistry analysis of paraffin embedded Human colon cancer tissue using 217565(KLK11 Antibody) at a dilution of 1/50(Cytoplasm).



In comparison with the IHC on the left, the same paraffin-embedded Human colon cancer tissue is first treated with the fusion protein and then with 217565(Anti-KLK11 Antibody) at dilution 1/50.



The image on the left is immunohistochemistry of paraffin-embedded Human liver cancer tissue using 217565(Anti-KLK11 Antibody) at a dilution of 1/50.



In comparison with the IHC on the left, the same paraffin-embedded Human liver cancer tissue is first treated with fusion protein and then with D222597(Anti-KLK11 Antibody) at dilution 1/50.