

## KLK12 RABBIT PAB

**Cat.#:** S221497

**Product Name:** Anti-KLK12 Rabbit Polyclonal Antibody

**Synonyms:** KLKL5; KLK-L5

**UNIPROT ID:** Q9UKR0 (Gene Accession - NP\_062544 )

**Background:** Kallikreins are a subgroup of serine proteases having diverse physiological functions. Growing evidence suggests that many kallikreins are implicated in carcinogenesis and some have potential as novel cancer and other disease biomarkers. This gene is one of the fifteen kallikrein subfamily members located in a cluster on chromosome 19. Alternate splicing of this gene results in three transcript variants encoding different isoforms.

**Immunogen:** Synthetic peptide of human KLK12

**Applications:** ELISA, WB, IHC

**Recommended Dilutions:** IHC: 50-100;WB: 500-2000;ELISA: 5000-10000

**Host Species:** Rabbit

**Clonality:** Rabbit Polyclonal

**Isotype:** Immunogen-specific rabbit IgG

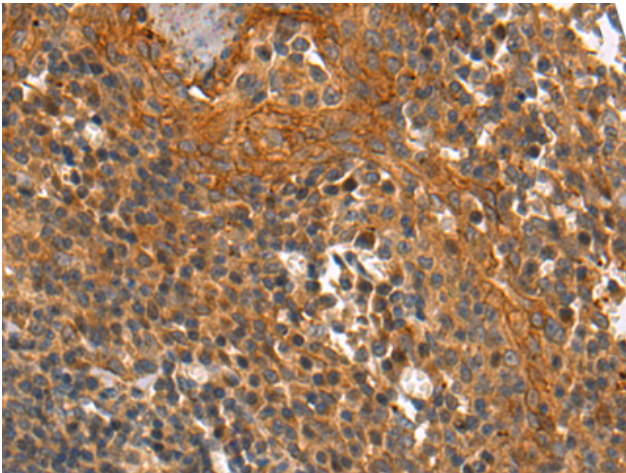
**Purification:** Antigen affinity purification

**Species Reactivity:** Human

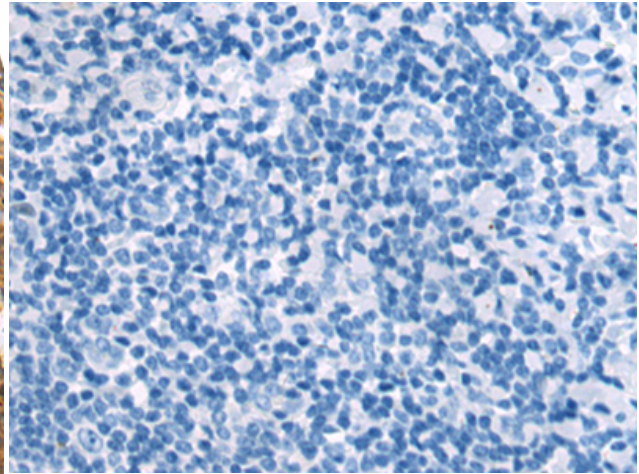
**Constituents:** PBS (without Mg<sup>2+</sup> and Ca<sup>2+</sup>), pH 7.4, 150 mM NaCl, 0.05% Sodium Azide and 40% glycerol

**Research Areas:** Signal Transduction, Cell Biology

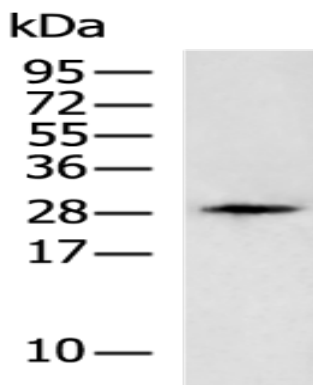
**Storage & Shipping:** Store at -20°C. Avoid repeated freezing and thawing



Immunohistochemistry analysis of paraffin embedded Human tonsil tissue using 221497(KLK12 Antibody) at a dilution of 1/20(Secreted).



In comparison with the IHC on the left, the same paraffin-embedded Human tonsil tissue is first treated with the synthetic peptide and then with 221497(Anti-KLK12 Antibody) at dilution 1/20.



Gel: 12%SDS-PAGE, Lysate: 40  $\mu$ g;  
Lane: HL60 cell lysate;  
Primary antibody: 221497(KLK12 Antibody) at dilution 1/500;  
Secondary antibody: HRP-conjugated Goat anti rabbit IgG at 1/5000 dilution;  
Exposure time: 2 minutes