

## KLK3 RABBIT PAB

**Cat.#:** S216222

**Product Name:** Anti-KLK3 Rabbit Polyclonal Antibody

**Synonyms:** APS; PSA; hK3; KLK2A1

**UNIPROT ID:** P07288 (Gene Accession - BC005307 )

**Background:** Kallikreins are a subgroup of serine proteases having diverse physiological functions. Growing evidence suggests that many kallikreins are implicated in carcinogenesis and some have potential as novel cancer and other disease biomarkers. The gene is one of the fifteen kallikrein subfamily members located in a cluster on chromosome 19. It encodes a single-chain glycoprotein, a protease which is synthesized in the epithelial cells of the prostate gland, and is present in seminal plasma. It is thought to function normally in the liquefaction of seminal coagulum, presumably by hydrolysis of the high molecular mass seminal vesicle protein. The serum level of this protein, called PSA in the clinical setting, is useful in the diagnosis and monitoring of prostatic carcinoma. Alternate splicing of this gene generates several transcript variants encoding different isoforms. [provided by RefSeq, Dec 2019]

**Immunogen:** Fusion protein of human KLK3

**Applications:** ELISA, WB, IHC

**Recommended Dilutions:** IHC: 50-200;WB: 1000-5000;ELISA: 5000-10000

**Host Species:** Rabbit

**Clonality:** Rabbit Polyclonal

**Isotype:** Immunogen-specific rabbit IgG

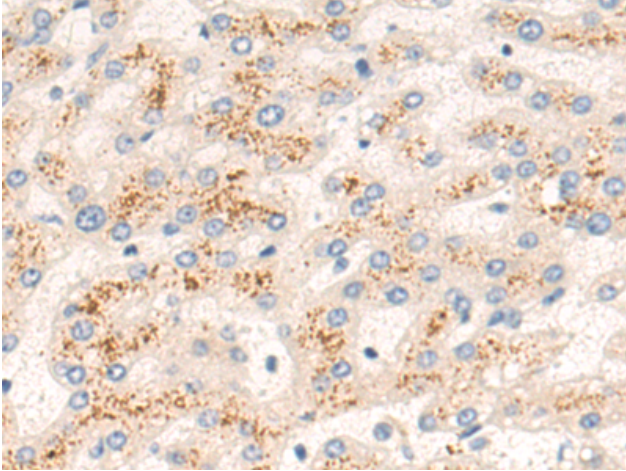
**Purification:** Antigen affinity purification

**Species Reactivity:** Human

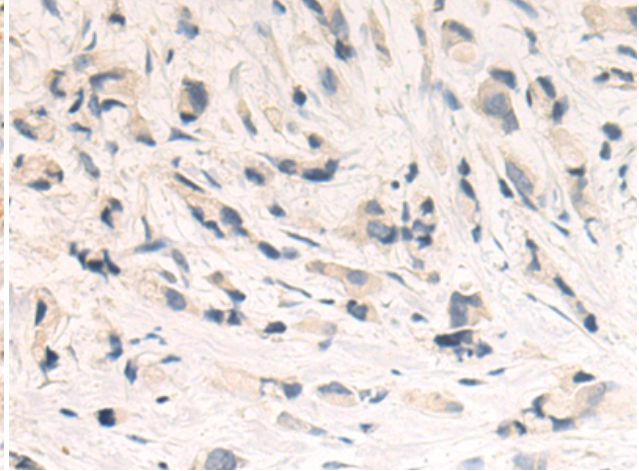
**Constituents:** PBS (without Mg<sup>2+</sup> and Ca<sup>2+</sup>), pH 7.4, 150 mM NaCl, 0.05% Sodium Azide and 40% glycerol

**Research Areas:** Signal Transduction, Cancer, Neuroscience

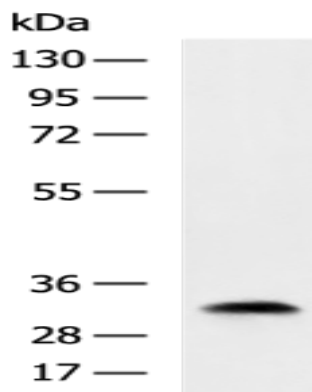
**Storage & Shipping:** Store at -20°C. Avoid repeated freezing and thawing



Immunohistochemistry analysis of paraffin-embedded Human liver cancer tissue using 216222(KLK3 Antibody) at a dilution of 1/55(Cytoplasm).



Immunohistochemistry analysis of paraffin-embedded Human breast cancer tissue using 216222(Anti-KLK3 Antibody) at a dilution of 1/55.



Gel: 8%SDS-PAGE, Lysate: 40  $\mu$ g;  
Lane: Human prostate tissue lysate;  
Primary antibody: 216222(KLK3 Antibody) at dilution 1/800;  
Secondary antibody: HRP-conjugated Goat anti rabbit IgG at 1/5000 dilution;  
Exposure time: 5 seconds