

## KLK7 RABBIT PAB

**Cat.#:** S216607

**Product Name:** Anti-KLK7 Rabbit Polyclonal Antibody

**Synonyms:** hK7, SCCE, PRSS6

**UNIPROT ID:** P49862 (Gene Accession - BC032005 )

**Background:** This gene encodes a member of the kallikrein subfamily of serine proteases. These enzymes have diverse physiological functions and many kallikrein genes are biomarkers for cancer. The encoded protein has chymotrypsin-like activity and plays a role in the proteolysis of intercellular cohesive structures that precedes desquamation, the shedding of the outermost layer of the epidermis. The encoded protein may play a role in cancer invasion and metastasis, and increased expression of this gene is associated with unfavorable prognosis and progression of several types of cancer. Polymorphisms in this gene may play a role in the development of atopic dermatitis. Alternatively spliced transcript variants encoding multiple isoforms have been observed for this gene, which is one of fifteen kallikrein subfamily members located in a gene cluster on chromosome 19.

**Immunogen:** Fusion protein of human KLK7

**Applications:** ELISA, WB, IHC

**Recommended Dilutions:** IHC: 25-100;WB: 500-2000;ELISA: 2000-5000

**Host Species:** Rabbit

**Clonality:** Rabbit Polyclonal

**Isotype:** Immunogen-specific rabbit IgG

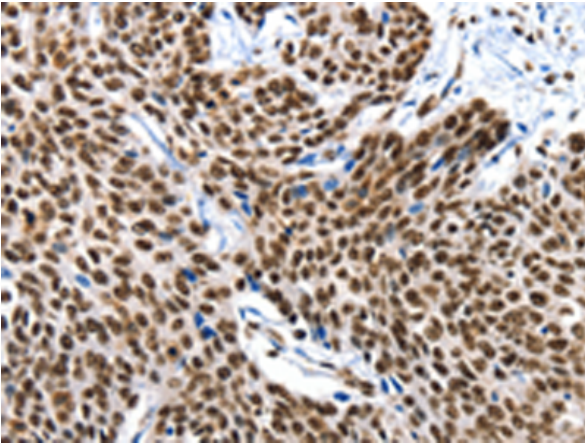
**Purification:** Antigen affinity purification

**Species Reactivity:** Human, Mouse

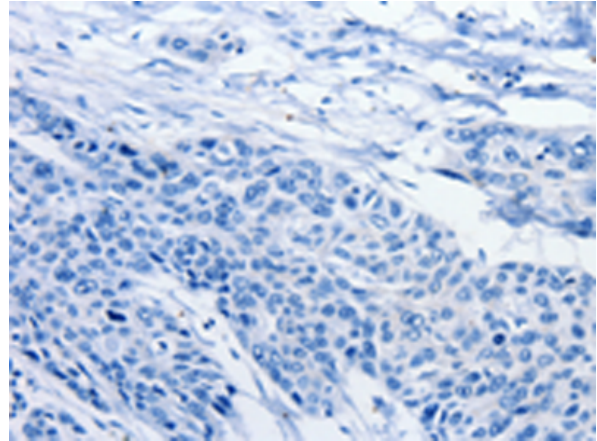
**Constituents:** PBS (without Mg<sup>2+</sup> and Ca<sup>2+</sup>), pH 7.4, 150 mM NaCl, 0.05% Sodium Azide and 40% glycerol

**Research Areas:** Signal Transduction, Cell Biology

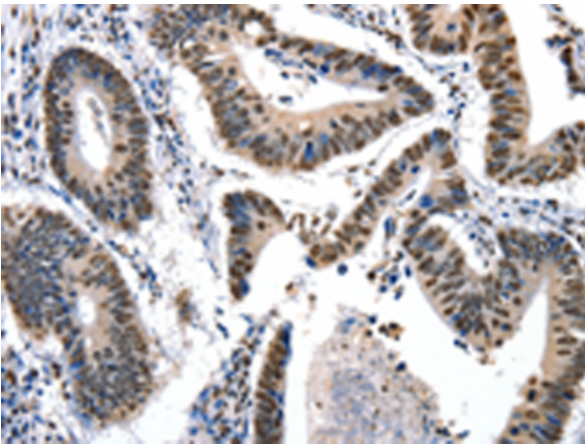
**Storage & Shipping:** Store at -20°C. Avoid repeated freezing and thawing



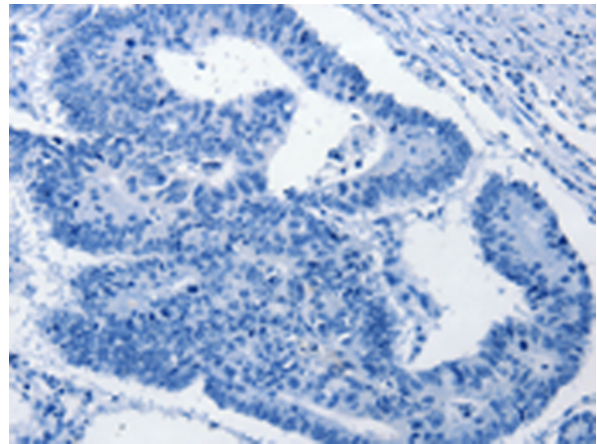
Immunohistochemistry analysis of paraffin embedded Human esophagus cancer tissue using 216607(KLK7 Antibody) at a dilution of 1/10(Cytoplasm, Nucleus).



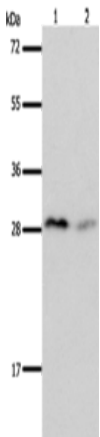
In comparison with the IHC on the left, the same paraffin-embedded Human esophagus cancer tissue is first treated with the fusion protein and then with 216607(Anti-KLK7 Antibody) at dilution 1/10.



The image on the left is immunohistochemistry of paraffin-embedded Human colon cancer tissue using 216607(Anti-KLK7 Antibody) at a dilution of 1/10.



In comparison with the IHC on the left, the same paraffin-embedded Human colon cancer tissue is first treated with fusion protein and then with D220906(Anti-KLK7 Antibody) at dilution 1/10.



Gel: 12%SDS-PAGE, Lysate: 40 µg;  
Lane 1-2: Mouse brain tissue, Mouse kidney tissue;  
Primary antibody: 216607(KLK7 Antibody) at dilution 1/600;  
Secondary antibody: Goat anti rabbit IgG at 1/8000 dilution;  
Exposure time: 20 seconds



# Product Description

Pioneering GTPase and Oncogene Product Development since 2010

---