

KMT4 RABBIT MAB

Cat.#: N263396

Product Name: Anti-KMT4 Rabbit Monoclonal Antibody

Synonyms: DOT 1; DOT1L; KMT4; Histone methyltransferase DOT1L; H3 lysine-79 specific

UNIPROT ID: Q8TEK3

Background: Histone methyltransferase. Methylates 'Lys-79' of histone H3. Nucleosomes are preferred as substrate compared to free histones. Binds to DNA.

Immunogen: Recombinant protein of human KMT4/Dot1L

Applications: WB,IHC-P

Recommended Dilutions: WB: 1/500-1/1000 IHC: 1/50-1/100

Host Species: Rabbit

Clonality: Rabbit Monoclonal

Clone ID: R01-7F6

MW: Calculated MW: 165 kDa; Observed MW: 185 kDa

Isotype: IgG

Purification: Affinity Purified

Species Reactivity: Human,Mouse

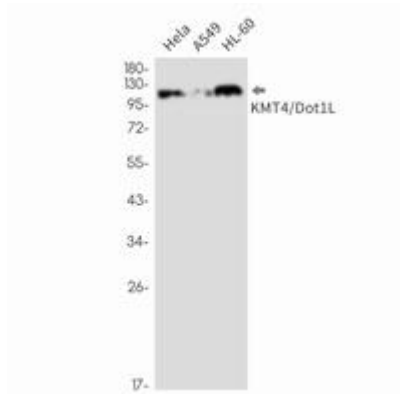
Conjugation: Unconjugated

Modification: Unmodified

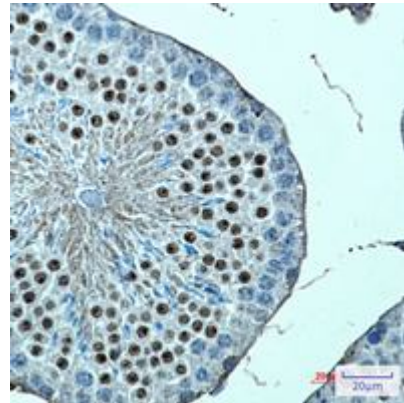
Constituents: PBS (without Mg²⁺ and Ca²⁺), pH 7.3 containing 50% glycerol, 0.5% BSA and 0.02% sodium azide

Research Areas: EpigeneticsyyyHistone methylation

Storage & Shipping: Store at -20°C. Avoid repeated freezing and thawing



Western blot analysis of KMT4/Dot1L in HeLa, A549, HL-60 lysates using KMT4/Dot1L antibody.



Immunohistochemistry analysis of paraffin-embedded mouse testis using KMT4 antibody. High-pressure and temperature Sodium Citrate pH 6.0 was used for antigen retrieval.