

KNOP1 RABBIT PAB

Cat.#: S221643

Product Name: Anti-KNOP1 Rabbit Polyclonal Antibody

Synonyms: TSG118; FAM191A; 101F10.1; C16orf88

UNIPROT ID: Q1ED39 (Gene Accession - NP_001013009)

Background: poly(A) RNA binding

Immunogen: Synthetic peptide of human KNOP1

Applications: ELISA, IHC

Recommended Dilutions: IHC: 40-200; ELISA: 5000-10000

Host Species: Rabbit

Clonality: Rabbit Polyclonal

Isotype: Immunogen-specific rabbit IgG

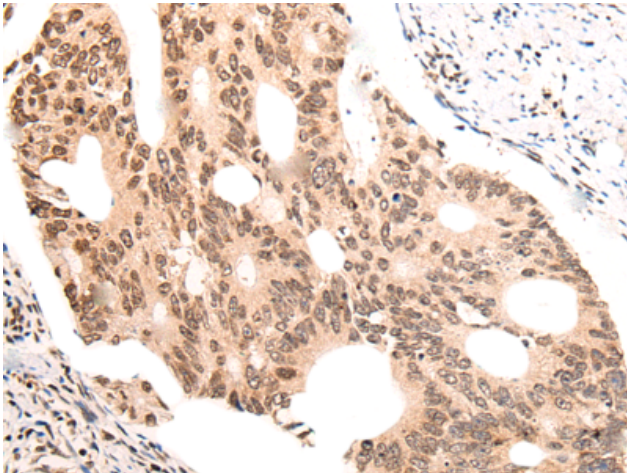
Purification: Antigen affinity purification

Species Reactivity: Human, Mouse

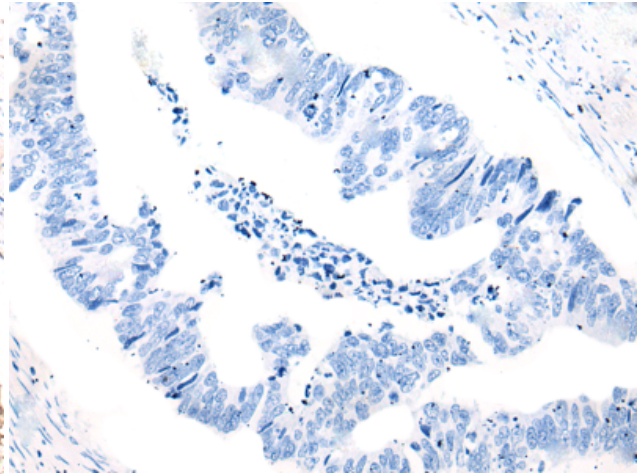
Constituents: PBS (without Mg²⁺ and Ca²⁺), pH 7.4, 150 mM NaCl, 0.05% Sodium Azide and 40% glycerol

Research Areas: Epigenetics and Nuclear Signaling

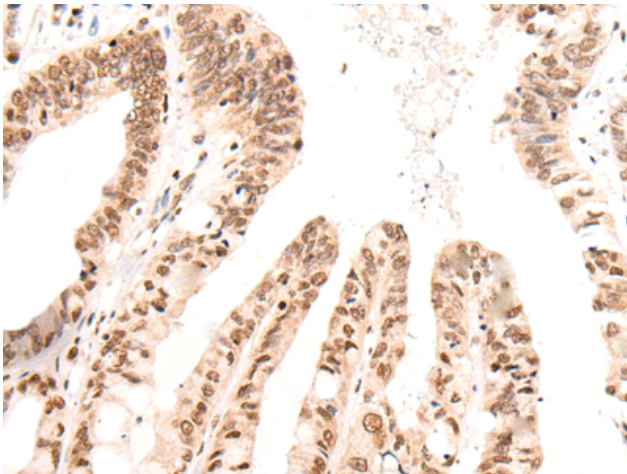
Storage & Shipping: Store at -20°C. Avoid repeated freezing and thawing



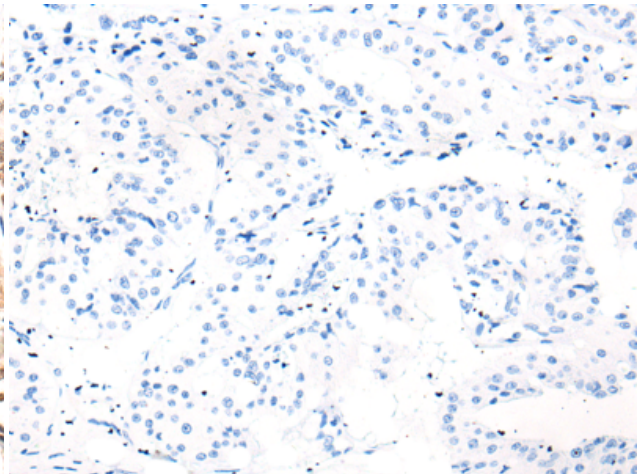
Immunohistochemistry analysis of paraffin embedded Human colorectal cancer tissue using 221643(KNOPI Antibody) at a dilution of 1/55(Nucleus).



In comparison with the IHC on the left, the same paraffin-embedded Human colorectal cancer tissue is first treated with the synthetic peptide and then with 221643(Anti-KNOPI Antibody) at dilution 1/55.



The image on the left is immunohistochemistry of paraffin-embedded Human liver cancer tissue using 221643(Anti-KNOPI Antibody) at a dilution of 1/55.



In comparison with the IHC on the left, the same paraffin-embedded Human liver cancer tissue is first treated with synthetic peptide and then with D263332(Anti-KNOPI Antibody) at dilution 1/55.