

KRT10 RABBIT PAB

Cat.#: S219703

Product Name: Anti-KRT10 Rabbit Polyclonal Antibody

Synonyms: BIE, EHK, K10, KPP, BCIE, CK10

UNIPROT ID: P13645 (Gene Accession - NP_000412)

Background: This gene encodes a member of the type I (acidic) cytokeratin family, which belongs to the superfamily of intermediate filament (IF) proteins. Keratins are heteropolymeric structural proteins which form the intermediate filament. These filaments, along with actin microfilaments and microtubules, compose the cytoskeleton of epithelial cells. Mutations in this gene are associated with epidermolytic hyperkeratosis. This gene is located within a cluster of keratin family members on chromosome 17q21.

Immunogen: Synthetic peptide of human KRT10

Applications: ELISA, IHC

Recommended Dilutions: IHC: 25-100; ELISA: 500-5000

Host Species: Rabbit

Clonality: Rabbit Polyclonal

Isotype: Immunogen-specific rabbit IgG

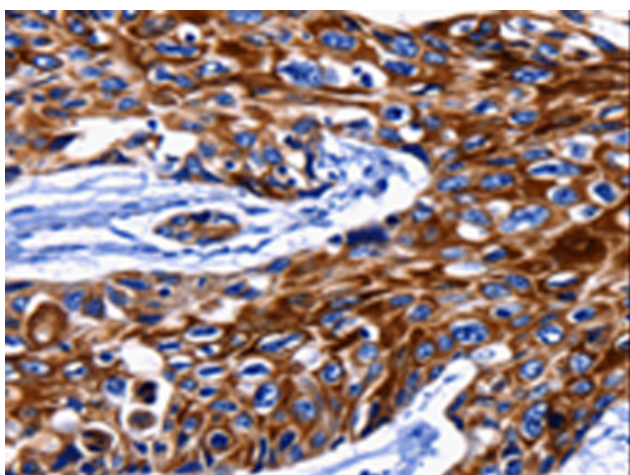
Purification: Antigen affinity purification

Species Reactivity: Human, Mouse, Rat

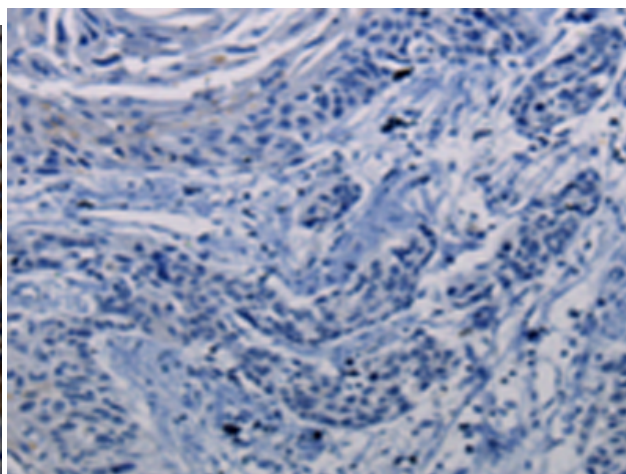
Constituents: PBS (without Mg²⁺ and Ca²⁺), pH 7.4, 150 mM NaCl, 0.05% Sodium Azide and 40% glycerol

Research Areas: Signal Transduction

Storage & Shipping: Store at -20°C. Avoid repeated freezing and thawing



Immunohistochemistry analysis of paraffin embedded Human esophagus cancer tissue using 219703(KRT10 Antibody) at a dilution of 1/25(Cytoplasm, Cell membrane).



In comparison with the IHC on the left, the same paraffin-embedded Human esophagus cancer tissue is first treated with the synthetic peptide and then with 219703(Anti-KRT10 Antibody) at dilution 1/25.