

KRT23 RABBIT PAB

Cat.#: S210141

Product Name: Anti-KRT23 Rabbit Polyclonal Antibody

Synonyms: K23; CK23; HAIK1

UNIPROT ID: Q9C075 (Gene Accession - BC028356)

Background: The protein encoded by this gene is a member of the keratin family. The keratins are intermediate filament proteins responsible for the structural integrity of epithelial cells and are subdivided into cytokeratins and hair keratins. The type I cytokeratins consist of acidic proteins which are arranged in pairs of heterotypic keratin chains. The type I cytokeratin genes are clustered in a region of chromosome 17q12-q21. Alternative splicing results in multiple transcript variants.

Immunogen: Fusion protein of human KRT23

Applications: ELISA, WB, IHC

Recommended Dilutions: IHC: 50-200;WB: 500-2000;ELISA: 5000-10000

Host Species: Rabbit

Clonality: Rabbit Polyclonal

Isotype: Immunogen-specific rabbit IgG

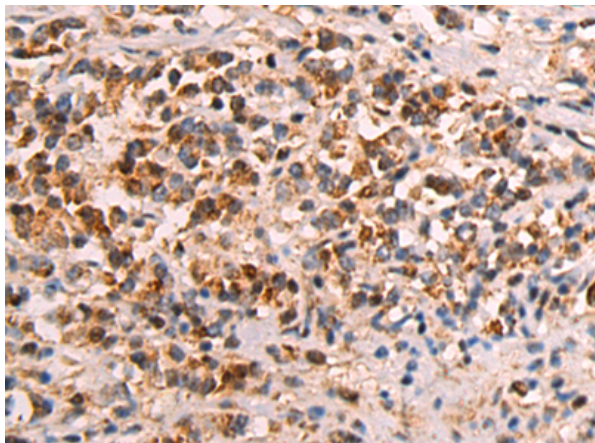
Purification: Antigen affinity purification

Species Reactivity: Human, Mouse

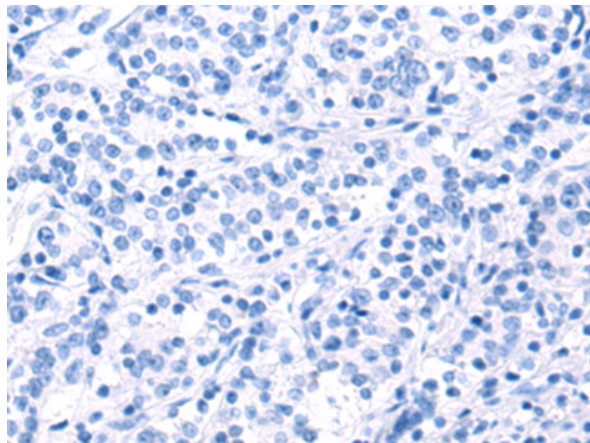
Constituents: PBS (without Mg²⁺ and Ca²⁺), pH 7.4, 150 mM NaCl, 0.05% Sodium Azide and 40% glycerol

Research Areas: Signal Transduction

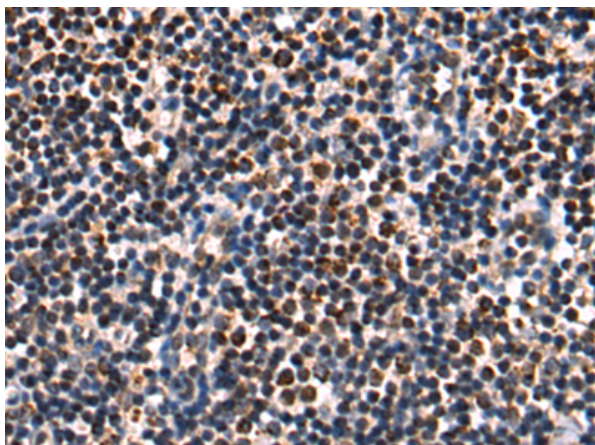
Storage & Shipping: Store at -20°C. Avoid repeated freezing and thawing



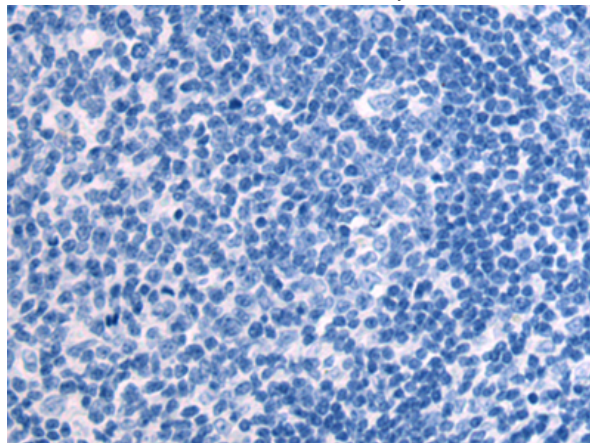
Immunohistochemistry analysis of paraffin embedded Human gastric cancer tissue using 210141(KRT23 Antibody) at a dilution of 1/85(Cytoplasm).



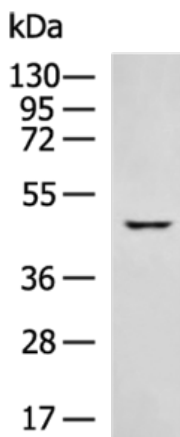
In comparison with the IHC on the left, the same paraffin-embedded Human gastric cancer tissue is first treated with the fusion protein and then with 210141(Anti-KRT23 Antibody) at dilution 1/85.



The image on the left is immunohistochemistry of paraffin-embedded Human tonsil tissue using 210141(Anti-KRT23 Antibody) at a dilution of 1/85.



In comparison with the IHC on the left, the same paraffin-embedded Human tonsil tissue is first treated with fusion protein and then with D120242(Anti-KRT23 Antibody) at dilution 1/85.



Gel: 8%SDS-PAGE, Lysate: 40 µg;
 Lane: HeLa cell lysate;
 Primary antibody: 210141(KRT23 Antibody) at dilution 1/600;
 Secondary antibody: HRP-conjugated Goat anti rabbit IgG at 1/5000 dilution;
 Exposure time: 20 seconds



Product Description

Pioneering GTPase and Oncogene Product Development since 2010
