

KRTAP11-1 RABBIT PAB

Cat.#: S221322

Product Name: Anti-KRTAP11-1 Rabbit Polyclonal Antibody

Synonyms: HACL1; HACL-1; KAP11.1

UNIPROT ID: Q8IUC1 (Gene Accession - NP_787054)

Background: In the hair cortex, hair keratin intermediate filaments are embedded in an interfilamentous matrix consisting of hair keratin-associated proteins (KRTAP), which are essential for the formation of a rigid and resistant hair shaft through their extensive disulfide bond cross-linking with abundant cysteine residues of hair keratins. The matrix proteins include the high-sulfur and high-glycine-tyrosine keratins.

Immunogen: Synthetic peptide of human KRTAP11-1

Applications: ELISA, IHC

Recommended Dilutions: IHC: 20-100; ELISA: 5000-10000

Host Species: Rabbit

Clonality: Rabbit Polyclonal

Isotype: Immunogen-specific rabbit IgG

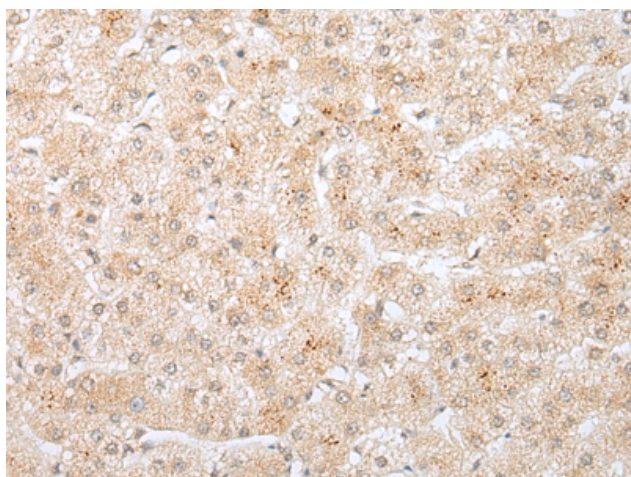
Purification: Antigen affinity purification

Species Reactivity: Human

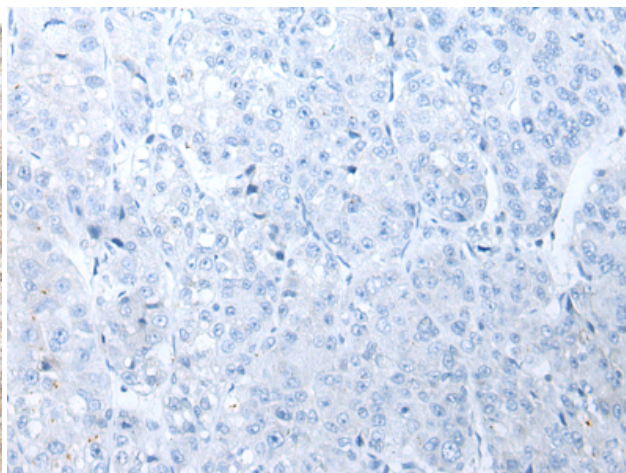
Constituents: PBS (without Mg²⁺ and Ca²⁺), pH 7.4, 150 mM NaCl, 0.05% Sodium Azide and 40% glycerol

Research Areas: Signal Transduction

Storage & Shipping: Store at -20°C. Avoid repeated freezing and thawing



Immunohistochemistry analysis of paraffin embedded Human liver cancer tissue using 221322(KRTAP11-1 Antibody) at a dilution of 1/20(Cytoplasm).



In comparison with the IHC on the left, the same paraffin-embedded Human liver cancer tissue is first treated with the synthetic peptide and then with 221322(Anti-KRTAP11-1 Antibody) at dilution 1/20.