

L1CAM RABBIT MAB

Cat.#: N262452

Product Name: Anti-L1CAM Rabbit Monoclonal Antibody

Synonyms: L1CAM; CAML1; MIC5; Neural cell adhesion molecule L1; N-CAM-L1; NCAM-L1; CD antigen CD171

UNIPROT ID: P32004

Background: Cell adhesion molecule with an important role in the development of the nervous system. Involved in neuron-neuron adhesion, neurite fasciculation, outgrowth of neurites, etc. Binds to axonin on neurons.

Immunogen: Recombinant protein of human L1CAM

Applications: WB,IHC-P

Recommended Dilutions: WB: 1/500-1/1000 IHC: 1/50-1/100

Host Species: Rabbit

Clonality: Rabbit Monoclonal

Clone ID: R04-813

MW: Calculated MW: 140 kDa; Observed MW: 140 kDa

Isotype: IgG

Purification: Affinity Purified

Species Reactivity: Human

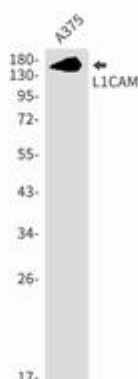
Conjugation: Unconjugated

Modification: Unmodified

Constituents: PBS (without Mg²⁺ and Ca²⁺), pH 7.3 containing 50% glycerol, 0.5% BSA and 0.02% sodium azide

Research Areas: Signal Transduction

Storage & Shipping: Store at -20°C. Avoid repeated freezing and thawing



Western blot analysis of L1CAM in A375 lysates using L1CAM antibody.



Product Description

Pioneering GTPase and Oncogene Product Development since 2010
