

## LAMB3 RABBIT PAB

**Cat.#:** S211321

**Product Name:** Anti-LAMB3 Rabbit Polyclonal Antibody

**Synonyms:** LAM5; LAMNBI; BM600-125KDA

**UNIPROT ID:** Q13751 (Gene Accession - BC075838 )

**Background:** The product encoded by this gene is a laminin that belongs to a family of basement membrane proteins. This protein is a beta subunit laminin, which together with an alpha and a gamma subunit, forms laminin-5. Mutations in this gene cause epidermolysis bullosa junctional Herlitz type, and generalized atrophic benign epidermolysis bullosa, diseases that are characterized by blistering of the skin. Multiple alternatively spliced transcript variants that encode the same protein have been found for this gene.

**Immunogen:** Fusion protein of human LAMB3

**Applications:** ELISA, WB, IHC

**Recommended Dilutions:** IHC: 50-200;WB: 200-1000;ELISA: 1000-2000

**Host Species:** Rabbit

**Clonality:** Rabbit Polyclonal

**Isotype:** Immunogen-specific rabbit IgG

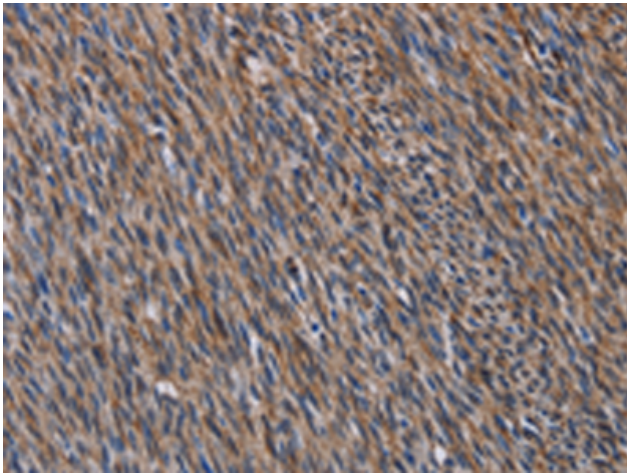
**Purification:** Antigen affinity purification

**Species Reactivity:** Human, Mouse

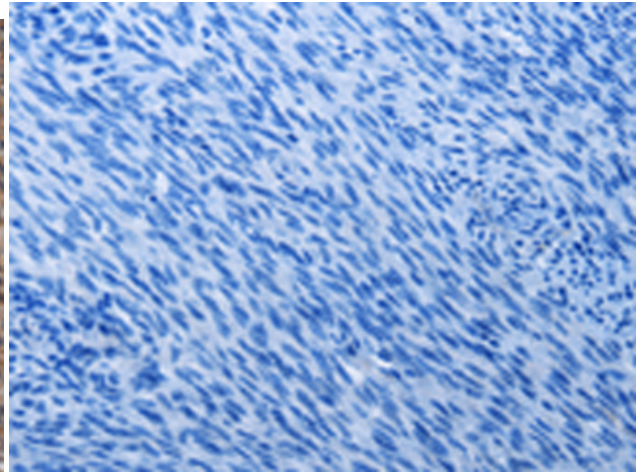
**Constituents:** PBS (without Mg<sup>2+</sup> and Ca<sup>2+</sup>), pH 7.4, 150 mM NaCl, 0.05% Sodium Azide and 40% glycerol

**Research Areas:** Signal Transduction, Neuroscience, Cardiovascular

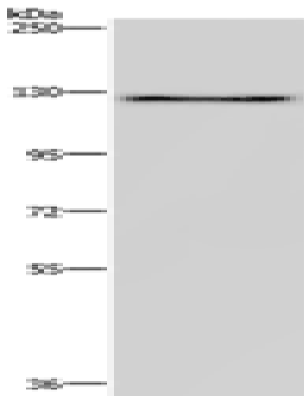
**Storage & Shipping:** Store at -20°C. Avoid repeated freezing and thawing



Immunohistochemistry analysis of paraffin embedded Human sarcoma tissue using 211321(LAMB3 Antibody) at a dilution of 1/40(Cytoplasm).



In comparison with the IHC on the left, the same paraffin-embedded Human sarcoma tissue is first treated with the fusion protein and then with 211321(Anti-LAMB3 Antibody) at dilution 1/40.



Gel: 6%SDS-PAGE, Lysate: 40 µg;  
Lane: PC3 cells;  
Primary antibody: 211321(LAMB3 Antibody) at dilution 1/200;  
Secondary antibody: Goat anti rabbit IgG at 1/8000 dilution;  
Exposure time: 20 seconds