

## LAMIN B2 (8F6) MOUSE MAB

**Cat.#:** N261165

**Product Name:** Anti-Lamin B2 (8F6) Mouse Monoclonal Antibody

**Synonyms:** LMN2; LAMB2

**UNIPROT ID:** Q03252

**Background:** Lamins are components of the nuclear lamina, a fibrous layer on the nucleoplasmic side of the inner nuclear membrane, which is thought to provide a framework for the nuclear envelope and may also interact with chromatin.

**Immunogen:** Recombinant human Lamin B2 protein.

**Applications:** WB,IP

**Recommended Dilutions:** WB: 1/500-1/1000 IP: 1/20

**Host Species:** Mouse

**Clonality:** Mouse Monoclonal

**Clone ID:** 8F6-E8-F12

**MW:** Calculated MW: 70 kDa; Observed MW: 70 kDa

**Isotype:** IgG1

**Purification:** Affinity Purified

**Species Reactivity:** Human,Mouse

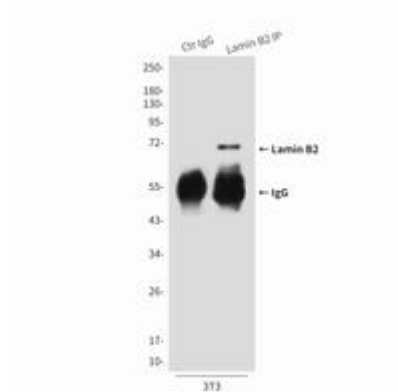
**Conjugation:** Unconjugated

**Modification:** Unmodified

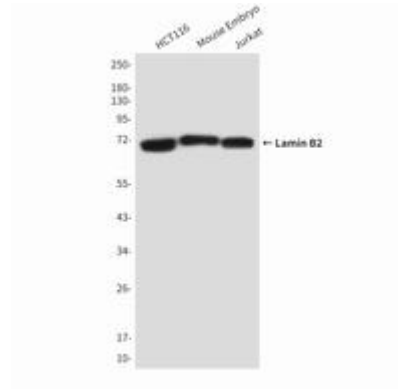
**Constituents:** PBS (without Mg<sup>2+</sup> and Ca<sup>2+</sup>), pH 7.3 containing 50% glycerol, 0.5% BSA and 0.02% sodium azide

**Research Areas:** Cell Biology

**Storage & Shipping:** Store at -20°C. Avoid repeated freezing and thawing



Immunoprecipitation analysis of Lamin B2 (8F6) in HeLa lysates using Lamin B2 antibody.



Western blot analysis of Lamin B2 in HCT116, mouse Embryo and Jurkat lysates using Lamin B2 antibody.