

LAMIN B2 RABBIT MAB

Cat.#: N262458

Product Name: Anti-Lamin B2 Rabbit Monoclonal Antibody

Synonyms: LMN2; LAMB2

UNIPROT ID: Q03252

Background: Lamins are components of the nuclear lamina, a fibrous layer on the nucleoplasmic side of the inner nuclear membrane, which is thought to provide a framework for the nuclear envelope and may also interact with chromatin.

Immunogen: A synthetic peptide of human Lamin B2

Applications: WB,IHC-F,IHC-P,ICC/IF,IP

Recommended Dilutions: WB: 1/500-1/1000 IHC: 1/50-1/100 IF: 1/50-1/200 IP: 1/20

Host Species: Rabbit

Clonality: Rabbit Monoclonal

Clone ID: R02-2J2

MW: Calculated MW: 70 kDa; Observed MW: 70 kDa

Isotype: IgG

Purification: Affinity Purified

Species Reactivity: Human,Mouse,Rat

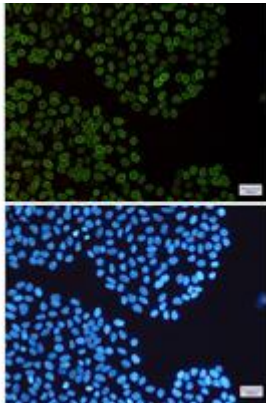
Conjugation: Unconjugated

Modification: Unmodified

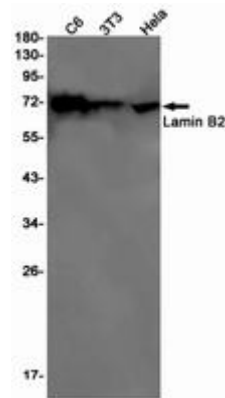
Constituents: PBS (without Mg²⁺ and Ca²⁺), pH 7.3 containing 50% glycerol, 0.5% BSA and 0.02% sodium azide

Research Areas: Cell Biology

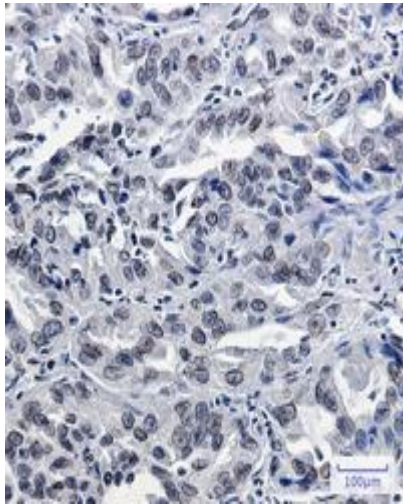
Storage & Shipping: Store at -20°C. Avoid repeated freezing and thawing



Immunocytochemistry analysis of Lamin B2 (green) in HeLa using Lamin B2 antibody, and DAPI (blue)



Western blot analysis of Lamin B2 in C6, 3T3, HeLa lysates using Lamin B2 antibody.



Immunohistochemistry analysis of paraffin-embedded Human lung cancer using Lamin B2 antibody. High-pressure and temperature Sodium Citrate pH 6.0 was used for antigen retrieval.