

LATS1 RABBIT PAB

Cat.#: N225241

Product Name: Anti-LATS1 Rabbit pAb

Synonyms: Serine/threonine-protein kinase LATS1 (EC 2.7.11.1; Large tumor suppressor homolog 1; WARTS protein kinase; h-warts)

UNIPROT ID: O95835

Background: Negative regulator of YAP1 in the Hippo signaling pathway that plays a pivotal role in organ size control and tumor suppression by restricting proliferation and promoting apoptosis.

Immunogen: Synthesized peptide derived from human LATS1/2

Applications: WB,ELISA

Recommended Dilutions: WB: 1/500-1/1000 ELISA: 1/10000

Host Species: Rabbit

Clonality: Rabbit Polyclonal

Clone ID: -

MW: Calculated MW: 127 kDa; Observed MW: 120 kDa

Isotype: IgG

Purification: Affinity Purified

Species Reactivity: Human,Mouse,Rat

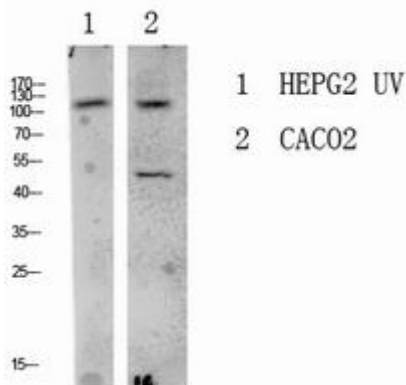
Conjugation: Unconjugated

Modification: Unmodified

Constituents: PBS (without Mg²⁺ and Ca²⁺), pH 7.3 containing 50% glycerol, 0.5% BSA and 0.02% sodium azide

Research Areas: Tags & Cell Markers

Storage & Shipping: Store at -20°C. Avoid repeated freezing and thawing



Western blot analysis of LATS1 in various lysates using LATS1 antibody.



Product Description

Pioneering GTPase and Oncogene Product Development since 2010
