

## LBH RABBIT PAB

**Cat.#:** S218953

**Product Name:** Anti-LBH Rabbit Polyclonal Antibody

**Synonyms:**

**UNIPROT ID:** Q53QV2 (Gene Accession - BC126434 )

**Background:** Transcriptional activator which may act in mitogen-activated protein kinase signaling pathway.

**Immunogen:** Fusion protein of human LBH

**Applications:** ELISA, WB, IHC

**Recommended Dilutions:** IHC: 50-200;WB: 500-2000;ELISA: 5000-10000

**Host Species:** Rabbit

**Clonality:** Rabbit Polyclonal

**Isotype:** Immunogen-specific rabbit IgG

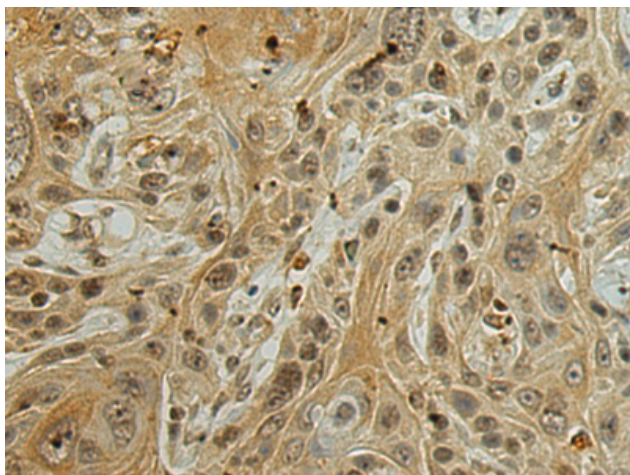
**Purification:** Antigen affinity purification

**Species Reactivity:** Human, Mouse, Rat

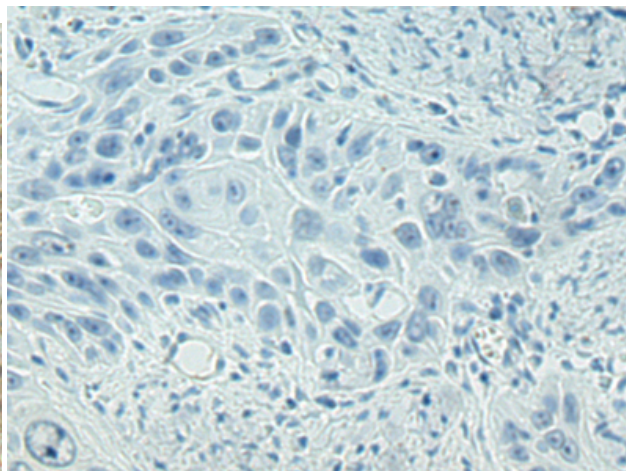
**Constituents:** PBS (without Mg<sup>2+</sup> and Ca<sup>2+</sup>), pH 7.4, 150 mM NaCl, 0.05% Sodium Azide and 40% glycerol

**Research Areas:** Epigenetics and Nuclear Signaling

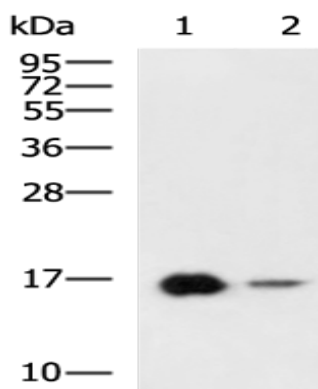
**Storage & Shipping:** Store at -20°C. Avoid repeated freezing and thawing



Immunohistochemistry analysis of paraffin embedded Human esophagus cancer tissue using 218953(LBH Antibody) at a dilution of 1/120(Nucleus).



In comparison with the IHC on the left, the same paraffin-embedded Human esophagus cancer tissue is first treated with the fusion protein and then with 218953(Anti-LBH Antibody) at dilution 1/120.



Gel: 12%SDS-PAGE, Lysate: 40  $\mu$ g;  
 Lane 1-2: Rat heart tissue, Mouse skeletal muscle tissue lysates;  
 Primary antibody: 218953(LBH Antibody) at dilution 1/800;  
 Secondary antibody: HRP-conjugated Goat anti rabbit IgG at 1/5000 dilution;  
 Exposure time: 5 minutes