

## LC3B (8H6) MOUSE MAB

**Cat.#:** N261323

**Product Name:** Anti-LC3B (8H6) Mouse Monoclonal Antibody

**Synonyms:** MAP1LC3B

**UNIPROT ID:** Q9GZQ8

**Background:** Ubiquitin-like modifier involved in formation of autophagosomal vacuoles (autophagosomes). Plays a role in mitophagy which contributes to regulate mitochondrial quantity and quality by eliminating the mitochondria to a basal level to fulfill cellular energy requirements and preventing excess ROS production.

**Immunogen:** Purified recombinant protein expressed in E.coli.

**Applications:** IHC-P

**Recommended Dilutions:** IHC: 1/50-1/100

**Host Species:** Mouse

**Clonality:** Mouse Monoclonal

**Clone ID:** 8H6-6D10-3A4

**MW:** -

**Isotype:** IgG1

**Purification:** Affinity Purified

**Species Reactivity:** Human

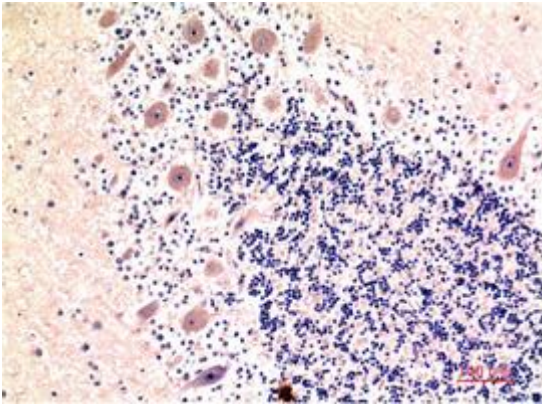
**Conjugation:** Unconjugated

**Modification:** Unmodified

**Constituents:** PBS (without Mg<sup>2+</sup> and Ca<sup>2+</sup>), pH 7.3 containing 50% glycerol, 0.5% BSA and 0.02% sodium azide

**Research Areas:** Signal Transduction

**Storage & Shipping:** Store at -20°C. Avoid repeated freezing and thawing



Immunohistochemistry analysis of paraffin-embedded Human Brain Tissue using LC3B (8H6) antibody. High-pressure and temperature Sodium Citrate pH 6.0 was used for antigen retrieval.