

LCK RABBIT MAB

Cat.#: N262464

Product Name: Anti-Lck Rabbit Monoclonal Antibody

Synonyms: LCK; Tyrosine-protein kinase Lck; Leukocyte C-terminal Src kinase; LSK; Lymphocyte cell-specific protein-tyrosine kinase; Protein YT16; Proto-oncogene Lck; T cell-specific protein-tyrosine kinase; p56-LCK

UNIPROT ID: P06239

Background: The Src family of protein tyrosine kinases, which includes Src, Lyn, Fyn, Yes, Lck, Blk, and Hck, are important in the regulation of growth and differentiation of eukaryotic cells. Src activity is regulated by tyrosine phosphorylation at two sites, but with opposing effects.

Immunogen: Recombinant protein of human Lck

Applications: WB,IHC-F,IHC-P,ICC/IF,IP

Recommended Dilutions: WB: 1/500-1/1000 IHC: 1/50-1/100 IF: 1/50-1/200 IP: 1/20

Host Species: Rabbit

Clonality: Rabbit Monoclonal

Clone ID: R01-8A5

MW: Calculated MW: 58 kDa; Observed MW: 58 kDa

Isotype: IgG

Purification: Affinity Purified

Species Reactivity: Human,Rat

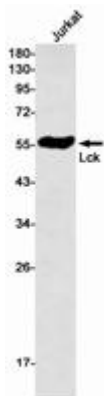
Conjugation: Unconjugated

Modification: Unmodified

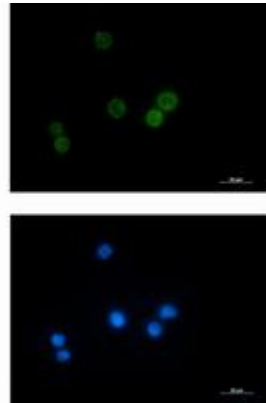
Constituents: PBS (without Mg²⁺ and Ca²⁺), pH 7.3 containing 50% glycerol, 0.5% BSA and 0.02% sodium azide

Research Areas: Immunology

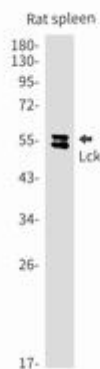
Storage & Shipping: Store at -20°C. Avoid repeated freezing and thawing



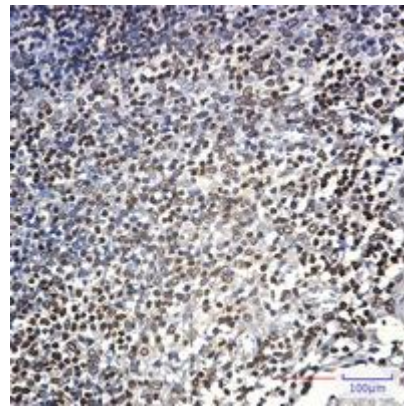
Western blot analysis of Lck in Jurkat lysates using Lck antibody



Immunocytochemistry analysis of Lck (green) in Jurkat using Lck antibody, and DAPI (blue).



Western blot analysis of Lck in rat spleen lysates using Lck antibody.



Immunohistochemistry analysis of paraffin-embedded Human tonsil using Lck antibody. High-pressure and temperature Sodium Citrate pH 6.0 was used for antigen retrieval.