

## LCMT1 RABBIT PAB

**Cat.#:** S211323

**Product Name:** Anti-LCMT1 Rabbit Polyclonal Antibody

**Synonyms:** LCMT; PPMT1; CGI-68

**UNIPROT ID:** Q9UIC8 (Gene Accession - BC014217 )

**Background:** LCMT1 catalyzes the methylation of the carboxyl group of the C-terminal leucine residue (Ieu309) of the catalytic subunit of protein phosphatase-2A.

**Immunogen:** Fusion protein of human LCMT1

**Applications:** ELISA, IHC

**Recommended Dilutions:** IHC: 25-100; ELISA: 1000-2000

**Host Species:** Rabbit

**Clonality:** Rabbit Polyclonal

**Isotype:** Immunogen-specific rabbit IgG

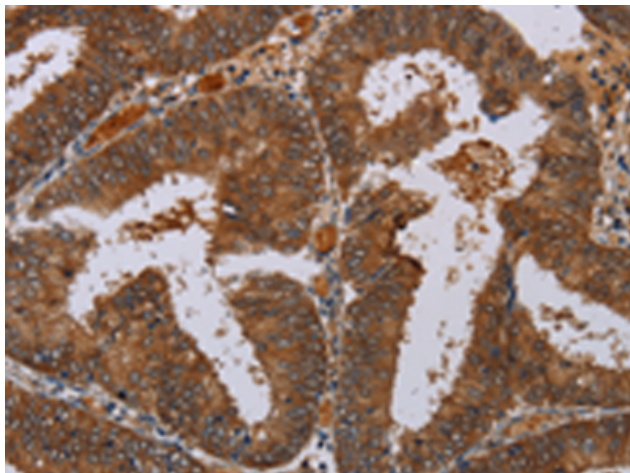
**Purification:** Antigen affinity purification

**Species Reactivity:** Human, Rat

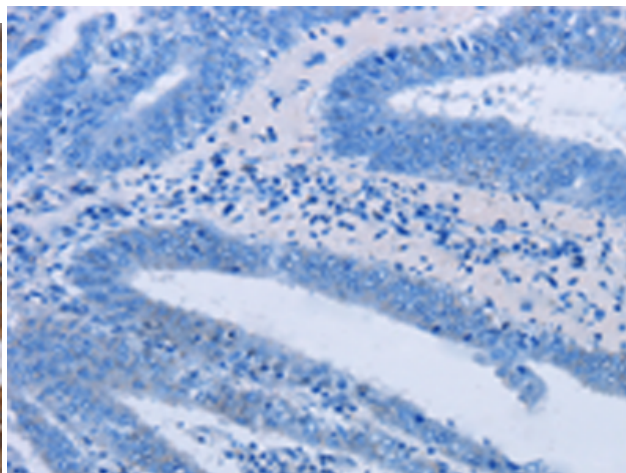
**Constituents:** PBS (without Mg<sup>2+</sup> and Ca<sup>2+</sup>), pH 7.4, 150 mM NaCl, 0.05% Sodium Azide and 40% glycerol

**Research Areas:** Metabolism, Signal Transduction

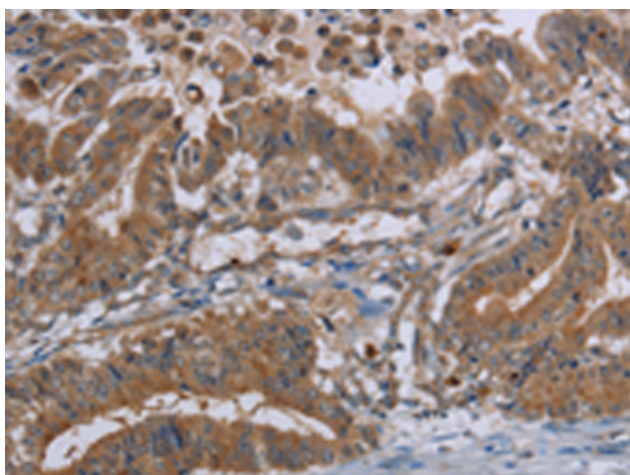
**Storage & Shipping:** Store at -20°C. Avoid repeated freezing and thawing



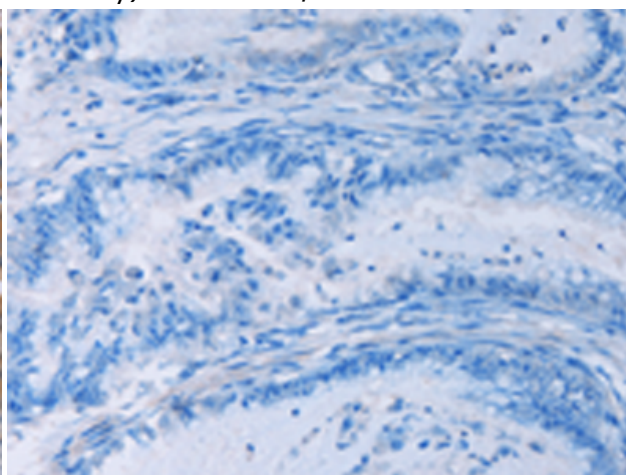
Immunohistochemistry analysis of paraffin embedded Human colon cancer tissue using 211323(LCMT1 Antibody) at a dilution of 1/20(Cytoplasm).



In comparison with the IHC on the left, the same paraffin-embedded Human colon cancer tissue is first treated with the fusion protein and then with 211323(Anti-LCMT1 Antibody) at dilution 1/20.



The image on the left is immunohistochemistry of paraffin-embedded Human esophagus cancer tissue using 211323(Anti-LCMT1 Antibody) at a dilution of 1/20.



In comparison with the IHC on the left, the same paraffin-embedded Human esophagus cancer tissue is first treated with fusion protein and then with D122609(Anti-LCMT1 Antibody) at dilution 1/20.