

## LDAH RABBIT PAB

**Cat.#:** S221652

**Product Name:** Anti-LDAH Rabbit Polyclonal Antibody

**Synonyms:** hLDAH; C2orf43

**UNIPROT ID:** Q9H6V9 (Gene Accession - NP\_068744 )

**Background:** Serine lipid hydrolase associated with lipid droplets. Highly expressed in macrophage-rich areas in atherosclerotic lesions, suggesting that it could promote cholesterol ester turnover in macrophages.

**Immunogen:** Synthetic peptide of human LDAH

**Applications:** ELISA, WB, IHC

**Recommended Dilutions:** IHC: 50-300;WB: 500-2000;ELISA: 5000-10000

**Host Species:** Rabbit

**Clonality:** Rabbit Polyclonal

**Isotype:** Immunogen-specific rabbit IgG

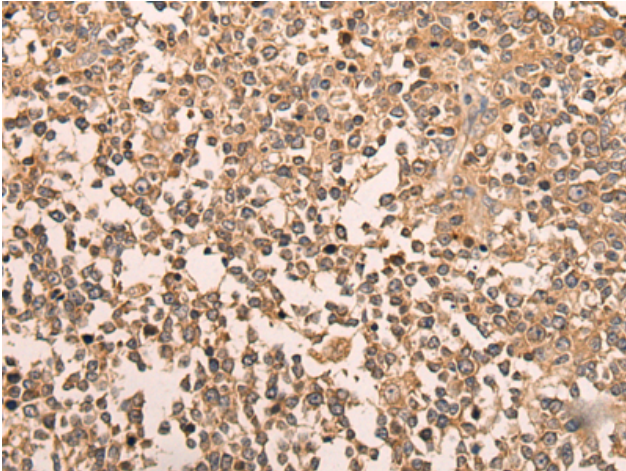
**Purification:** Antigen affinity purification

**Species Reactivity:** Human

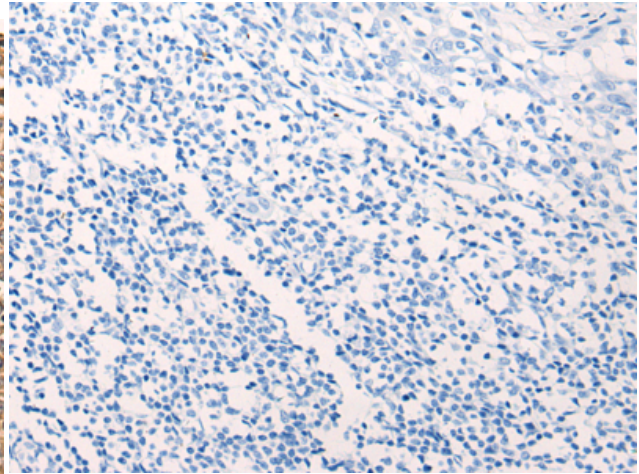
**Constituents:** PBS (without Mg<sup>2+</sup> and Ca<sup>2+</sup>), pH 7.4, 150 mM NaCl, 0.05% Sodium Azide and 40% glycerol

**Research Areas:** Cell Biology

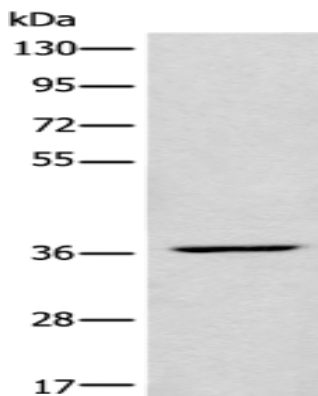
**Storage & Shipping:** Store at -20°C. Avoid repeated freezing and thawing



Immunohistochemistry analysis of paraffin embedded Human tonsil tissue using 221652(LDAH Antibody) at a dilution of 1/70(Cytoplasm).



In comparison with the IHC on the left, the same paraffin-embedded Human tonsil tissue is first treated with the synthetic peptide and then with 221652(Anti-LDAH Antibody) at dilution 1/70.



Gel: 8%SDS-PAGE, Lysate: 40  $\mu$ g;  
Lane: HEPG2 cell lysate;  
Primary antibody: 221652(LDAH Antibody) at dilution 1/650;  
Secondary antibody: Goat anti rabbit IgG at 1/8000 dilution;  
Exposure time: 3 seconds