

LDHAL6B RABBIT PAB

Cat.#: S219096

Product Name: Anti-LDHAL6B Rabbit Polyclonal Antibody

Synonyms: LDHL; LDH6B; LDHAL6

UNIPROT ID: Q9BYZ2 (Gene Accession - BC022034)

Background: LDHAL6B belongs to the LDH/MDH superfamily. LDH family. The specific function of the protein remains unknown.

Immunogen: Fusion protein of human LDHAL6B

Applications: ELISA, IHC

Recommended Dilutions: IHC: 50-300; ELISA: 5000-10000

Host Species: Rabbit

Clonality: Rabbit Polyclonal

Isotype: Immunogen-specific rabbit IgG

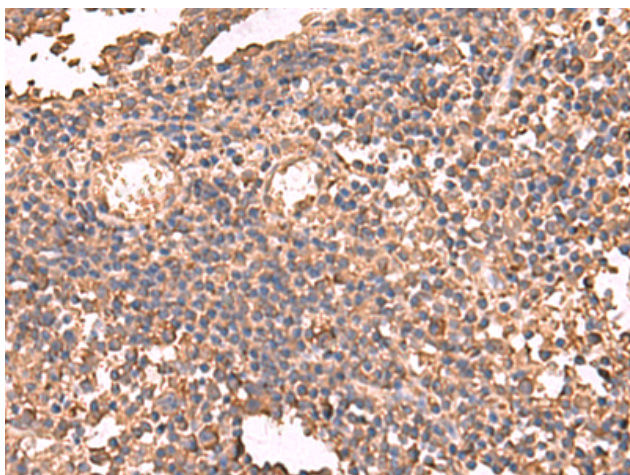
Purification: Antigen affinity purification

Species Reactivity: Human

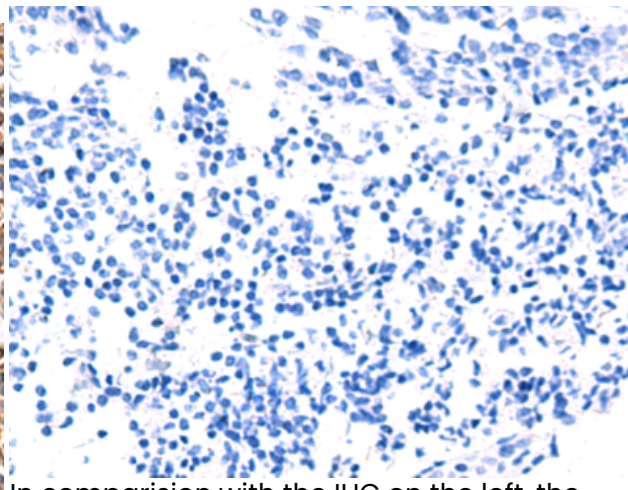
Constituents: PBS (without Mg²⁺ and Ca²⁺), pH 7.4, 150 mM NaCl, 0.05% Sodium Azide and 40% glycerol

Research Areas: Metabolism

Storage & Shipping: Store at -20°C. Avoid repeated freezing and thawing



Immunohistochemistry analysis of paraffin embedded Human tonsil tissue using 219096(LDHAL6B Antibody) at a dilution of 1/65(Cytoplasm).



In comparison with the IHC on the left, the same paraffin-embedded Human tonsil tissue is first treated with the fusion protein and then with 219096(Anti-LDHAL6B Antibody) at dilution 1/65.