

LDHC RABBIT PAB

Cat.#: S217570

Product Name: Anti-LDHC Rabbit Polyclonal Antibody

Synonyms: CT32; LDH3; LDHX

UNIPROT ID: P07864 (Gene Accession - BC064388)

Background: Lactate dehydrogenase C catalyzes the conversion of L-lactate and NAD to pyruvate and NADH in the final step of anaerobic glycolysis. LDHC is testis-specific and belongs to the lactate dehydrogenase family. Two transcript variants have been detected which differ in the 5' untranslated region.

Immunogen: Fusion protein of human LDHC

Applications: ELISA, WB, IHC

Recommended Dilutions: IHC: 100-200;WB: 1000-5000;ELISA: 5000-10000

Host Species: Rabbit

Clonality: Rabbit Polyclonal

Isotype: Immunogen-specific rabbit IgG

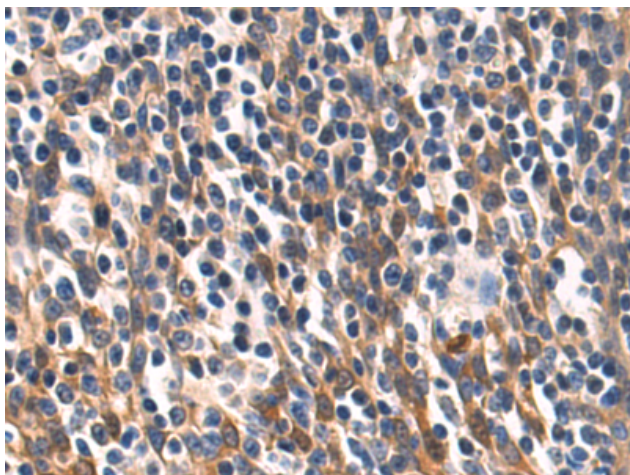
Purification: Antigen affinity purification

Species Reactivity: Human, Mouse

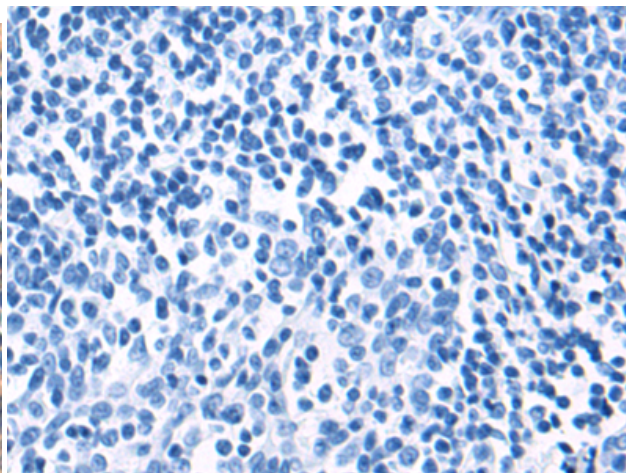
Constituents: PBS (without Mg²⁺ and Ca²⁺), pH 7.4, 150 mM NaCl, 0.05% Sodium Azide and 40% glycerol

Research Areas: Metabolism, Cancer

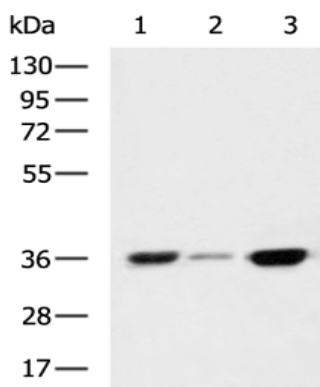
Storage & Shipping: Store at -20°C. Avoid repeated freezing and thawing



Immunohistochemistry analysis of paraffin embedded Human tonsil tissue using 217570(LDHC Antibody) at a dilution of 1/90(Cytoplasm).



In comparison with the IHC on the left, the same paraffin-embedded Human tonsil tissue is first treated with the fusion protein and then with 217570(Anti-LDHC Antibody) at dilution 1/90.



Gel: 8%SDS-PAGE, Lysate: 40 μ g;
 Lane 1-3: Mouse fetal liver tissue, HepG2 cell, A549 cell lysates;
 Primary antibody: 217570(LDHC Antibody) at dilution 1/1350;
 Secondary antibody: HRP-conjugated Goat anti rabbit IgG at 1/5000 dilution;
 Exposure time: 5 seconds