

## LEFTY RABBIT PAB

**Cat.#:** N225127

**Product Name:** Anti-LEFTY Rabbit pAb

**Synonyms:** LEFTY1; LEFTB; LEFTYB; Left-right determination factor 1; Left-right determination factor B; Protein lefty-1; Protein lefty-B; LEFTY2; EBAF; LEFTA; LEFTYA; TGFB4; PSEC0024; Left-right determination factor 2; Endometrial bleeding-associated factor; Left-right determination factor A; Protein lefty-2; Protein lefty-A; Transforming growth factor beta-4; TGF-beta-4

**UNIPROT ID:** O75610/O00292

**Background:** Required for left-right axis determination as a regulator of LEFTY2 and NODAL.

**Immunogen:** The antiserum was produced against synthesized peptide derived from the C-terminal region of human LEFTY1/LEFTY2. AA range:301-350

**Applications:** WB,ELISA

**Recommended Dilutions:** WB: 1/500-1/1000 ELISA: 1/10000

**Host Species:** Rabbit

**Clonality:** Rabbit Polyclonal

**Clone ID:** -

**MW:** Calculated MW: 41 kDa; Observed MW: 41 kDa

**Isotype:** IgG

**Purification:** Affinity Purified

**Species Reactivity:** Human,Mouse

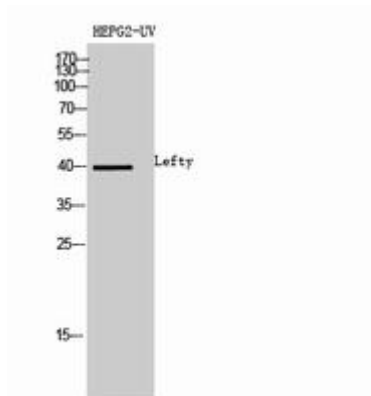
**Conjugation:** Unconjugated

**Modification:** Unmodified

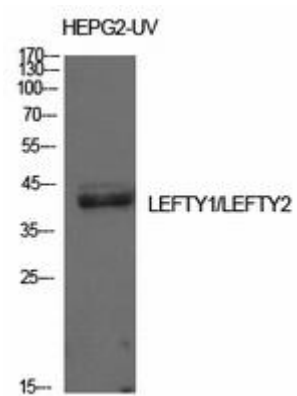
**Constituents:** PBS (without Mg<sup>2+</sup> and Ca<sup>2+</sup>), pH 7.3 containing 50% glycerol, 0.5% BSA and 0.02% sodium azide

**Research Areas:** Stem Cells

**Storage & Shipping:** Store at -20°C. Avoid repeated freezing and thawing



Western blot analysis of LEFTY in HEPG2UV lysates using Lefty antibody.



Western blot analysis of LEFTY in HepG2UV lysates using LEFTY antibody.