

LGII RABBIT MAB

Cat.#: N263402

Product Name: Anti-LGII Rabbit Monoclonal Antibody

Synonyms: ADLTE; ADPAEF; ADPEAF; Epitempin 1; EPITEMPIN; EPT; ETLI; LGII

UNIPROT ID: O95970

Background: Regulates voltage-gated potassium channels assembled from KCNA1, KCNA4 and KCNAB1. It slows down channel inactivation by precluding channel closure mediated by the KCNAB1 subunit. Ligand for ADAM22 that positively regulates synaptic transmission mediated by AMPA-type glutamate receptors (By similarity).

Immunogen: A synthetic peptide of human Lgi1/EPT

Applications: WB,IP

Recommended Dilutions: WB: 1/500-1/1000 IP: 1/20

Host Species: Rabbit

Clonality: Rabbit Monoclonal

Clone ID: R01-1H2

MW: Calculated MW: 64 kDa; Observed MW: 64 kDa

Isotype: IgG

Purification: Affinity Purified

Species Reactivity: Human,Mouse,Rat

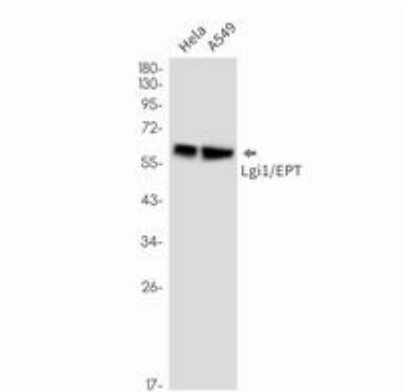
Conjugation: Unconjugated

Modification: Unmodified

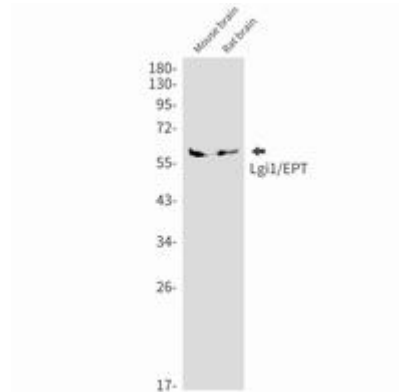
Constituents: PBS (without Mg²⁺ and Ca²⁺), pH 7.3 containing 50% glycerol, 0.5% BSA and 0.02% sodium azide

Research Areas: Neuroscience

Storage & Shipping: Store at -20°C. Avoid repeated freezing and thawing



Western blot analysis of Lgi1/EPT in HeLa, A549 lysates using Lgi1/EPT antibody.



Western blot analysis of Lgi1/EPT in mouse brain, rat brain lysates using LGI1 antibody.