

LGR6 RABBIT MAB

Cat.#: N262298

Product Name: Anti-LGR6 Rabbit Monoclonal Antibody

Synonyms: GPCR; Lgr6

UNIPROT ID: Q9HBX8

Background: Orphan receptor.

Immunogen: A synthetic peptide of human GPCR LGR6

Applications: WB,IHC-F,IHC-P,ICC/IF

Recommended Dilutions: WB: 1/500-1/1000 IHC: 1/50-1/100 IF: 1/50-1/200

Host Species: Rabbit

Clonality: Rabbit Monoclonal

Clone ID: R09-8B5

MW: Calculated MW: 104 kDa; Observed MW: 104 kDa

Isotype: IgG

Purification: Affinity Purified

Species Reactivity: Human,Mouse,Rat

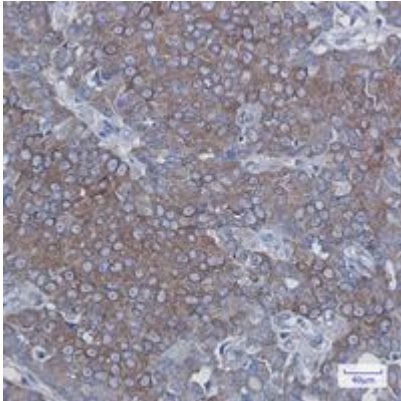
Conjugation: Unconjugated

Modification: Unmodified

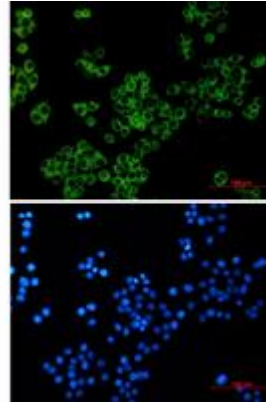
Constituents: PBS (without Mg²⁺ and Ca²⁺), pH 7.3 containing 50% glycerol, 0.5% BSA and 0.02% sodium azide

Research Areas: Signal Transduction

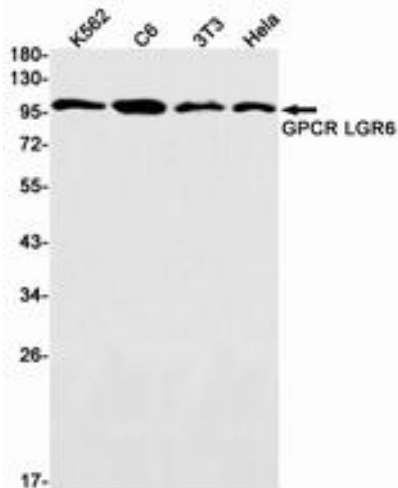
Storage & Shipping: Store at -20°C. Avoid repeated freezing and thawing



Immunohistochemistry analysis of paraffin-embedded Human breast cancer tissue using GPCR LGR6 antibody. High-pressure and temperature Sodium Citrate pH 6.0 was used for antigen retrieval.



Immunocytochemistry analysis of LGR6 (green) in Hela using GPCR LGR6 antibody, and DAPI (blue).



Western blot analysis of GPCR LGR6 in K562, C6, 3T3, Hela lysates using GPCR LGR6 antibody.