

LIG1 RABBIT MAB

Cat.#: N263403

Product Name: Anti-LIG1 Rabbit Monoclonal Antibody

Synonyms: LIG1; DNA ligase 1; DNA ligase I; Polydeoxyribonucleotide synthase [ATP] 1

UNIPROT ID: P18858

Background: DNA ligase that seals nicks in double-stranded DNA during DNA replication, DNA recombination and DNA repair.

Immunogen: A synthetic peptide of human LIG1

Applications: WB,IHC-F,IHC-P,ICC/IF

Recommended Dilutions: WB: 1/500-1/1000 IHC: 1/50-1/100 IF: 1/50-1/200

Host Species: Rabbit

Clonality: Rabbit Monoclonal

Clone ID: R02-5A2

MW: Calculated MW: 102 kDa; Observed MW: 102 kDa

Isotype: IgG

Purification: Affinity Purified

Species Reactivity: Human,Rat

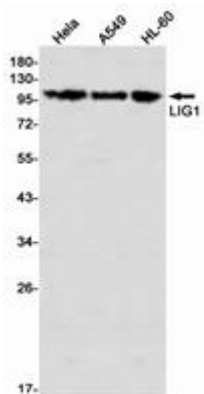
Conjugation: Unconjugated

Modification: Unmodified

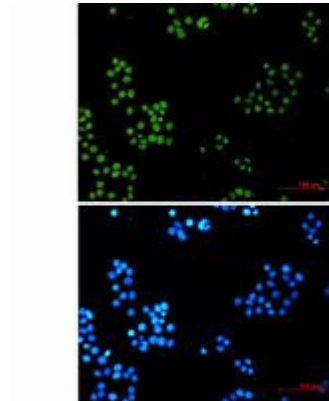
Constituents: PBS (without Mg²⁺ and Ca²⁺), pH 7.3 containing 50% glycerol, 0.5% BSA and 0.02% sodium azide

Research Areas: Epigenetics and Nuclear Signaling

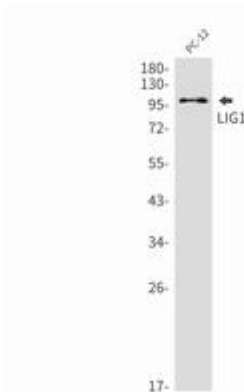
Storage & Shipping: Store at -20°C. Avoid repeated freezing and thawing



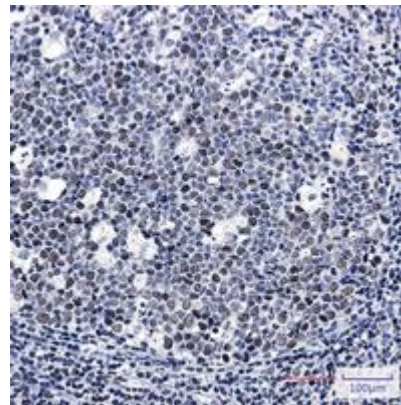
Western blot analysis of LIG1 in HeLa, A549, HL-60 lysates using LIG1 antibody



Immunocytochemistry analysis of LIG1 (green) in HeLa using LIG1 antibody, and DAPI (blue).



Western blot analysis of LIG1 in PC-12 lysates using LIG1 antibody.



Immunohistochemistry analysis of paraffin-embedded Human tonsil using LIG1 antibody. High-pressure and temperature Sodium Citrate pH 6.0 was used for antigen retrieval.