

## LIN28A (9G2) MOUSE MAB

**Cat.#:** N261188

**Product Name:** Anti-LIN28A (9G2) Mouse Monoclonal Antibody

**Synonyms:** CSDD1; FLJ12457; LIN 28; Lin-28A; LIN28; LIN28A; LN28A\_HUMAN; Protein lin-28 homolog A; ZCCHC1; Zinc finger CCHC domain-containing protein 1.

**UNIPROT ID:** Q9H9Z2

**Background:** Involved in the timing of developmental events and choice of stage specific cell fates. Acts as a suppressor of microRNA (miRNA) biogenesis by specifically binding the precursor let-7 (pre-let-7), a miRNA precursor. Acts by binding pre-let-7 and recruiting ZCCHC1/TUT4 uridylyltransferase, leading to the terminal uridylation of pre-let-7.

**Immunogen:** Purified recombinant fragment of LIN28 (aa93-209) expressed in E. Coli.

**Applications:** WB, ICC/IF

**Recommended Dilutions:** WB: 1/500-1/1000 IF: 1/50-1/200

**Host Species:** Mouse

**Clonality:** Mouse Monoclonal

**Clone ID:** 9G2-5B6-1D1

**MW:** Calculated MW: 23 kDa; Observed MW: 23 kDa

**Isotype:** IgG1

**Purification:** Ascitic Fluid

**Species Reactivity:** Human

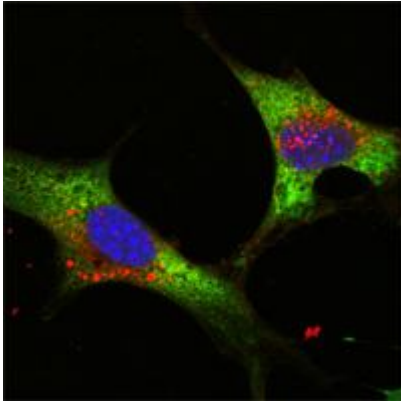
**Conjugation:** Unconjugated

**Modification:** Unmodified

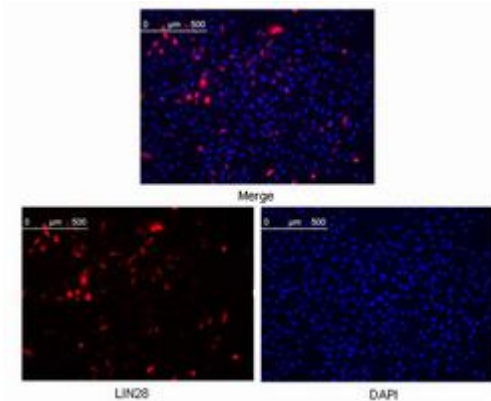
**Constituents:** PBS (without Mg<sup>2+</sup> and Ca<sup>2+</sup>), pH 7.3 containing 50% glycerol, 0.5% BSA and 0.02% sodium azide

**Research Areas:** Epigenetics and Nuclear Signaling

**Storage & Shipping:** Store at -20°C. Avoid repeated freezing and thawing



Immunofluorescence analysis of LIN28A (9G2) in NTERA-2 cells using LIN28A (9G2) antibody (green). Blue: DRAQ5 fluorescent DNA dye.



Immunofluorescence analysis of LIN28A (9G2) in Hela cells were transfected with pMX construct of Human LIN28 using LIN28A (9G2) antibody



Western blot analysis of LIN28A (9G2) in NTERA-2 lysates using LIN28A (9G2) antibody.