

## LIN37 RABBIT PAB

**Cat.#:** S218209

**Product Name:** Anti-LIN37 Rabbit Polyclonal Antibody

**Synonyms:** F25965; lin-37; ZK418.4

**UNIPROT ID:** Q96GY3 (Gene Accession - BC009071)

**Background:** The LIN proteins regulate an intercellular signaling process that induces formation of the hermaphrodite vulva in *C. elegans* by acting to prevent the activation of a receptor tyrosine kinase/Ras signaling pathway. LIN37 is a 246 amino acid protein that is a mammalian homolog of the *C. elegans* Lin-37 protein. LIN37 functions as a component of the DREAM complex (also known as the LINC complex), which is comprised of several proteins, all of which work in concert to repress cell cycle-dependent genes. LIN37 is encoded by a gene located on human chromosome 19q13.2.

**Immunogen:** Fusion protein of human LIN37

**Applications:** ELISA, IHC

**Recommended Dilutions:** IHC: 50-200; ELISA: 5000-10000

**Host Species:** Rabbit

**Clonality:** Rabbit Polyclonal

**Isotype:** Immunogen-specific rabbit IgG

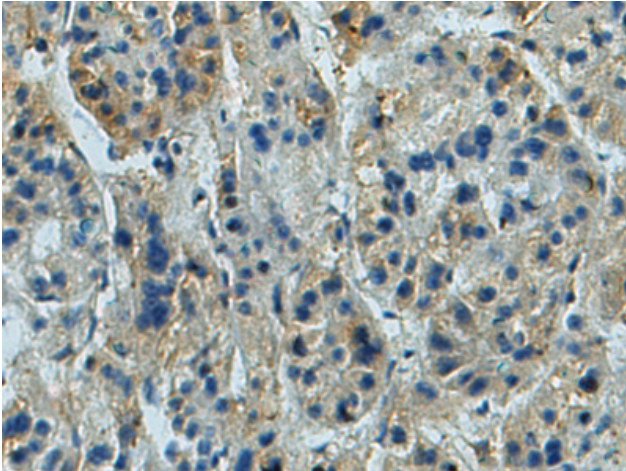
**Purification:** Antigen affinity purification

**Species Reactivity:** Human, Mouse

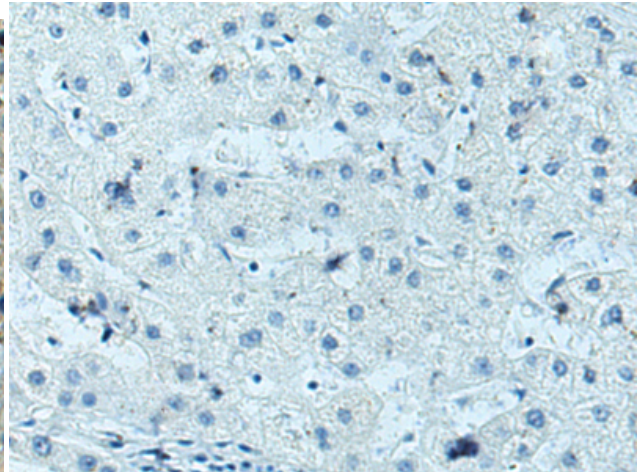
**Constituents:** PBS (without Mg<sup>2+</sup> and Ca<sup>2+</sup>), pH 7.4, 150 mM NaCl, 0.05% Sodium Azide and 40% glycerol

**Research Areas:** Epigenetics and Nuclear Signaling

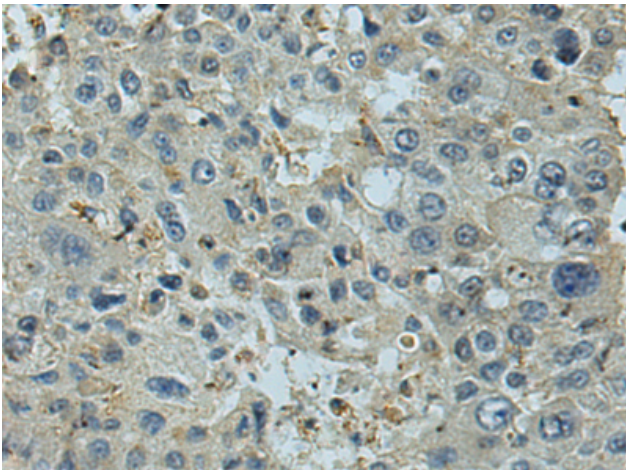
**Storage & Shipping:** Store at -20°C. Avoid repeated freezing and thawing



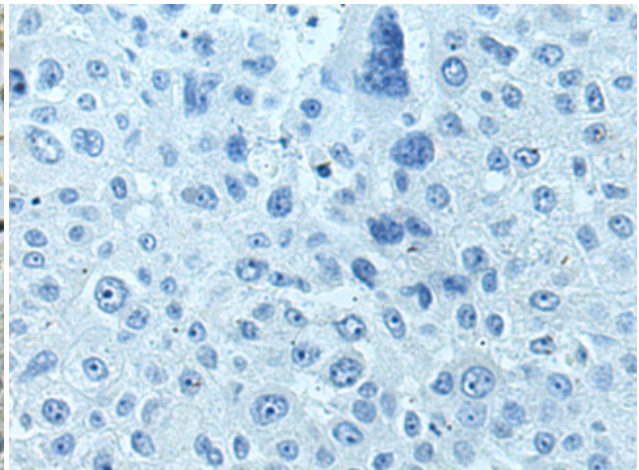
Immunohistochemistry analysis of paraffin embedded Human prostate cancer tissue using 218209(LIN37 Antibody) at a dilution of 1/80(Cytoplasm).



In comparison with the IHC on the left, the same paraffin-embedded Human prostate cancer tissue is first treated with the fusion protein and then with 218209(Anti-LIN37 Antibody) at dilution 1/80.



The image on the left is immunohistochemistry of paraffin-embedded Human liver cancer tissue using 218209(Anti-LIN37 Antibody) at a dilution of 1/80.



In comparison with the IHC on the left, the same paraffin-embedded Human liver cancer tissue is first treated with fusion protein and then with D223953(Anti-LIN37 Antibody) at dilution 1/80.