

## LINE 1 ORF1P RABBIT MAB

**Cat.#:** N263405

**Product Name:** Anti-LINE 1 ORF1p Rabbit Monoclonal Antibody

**Synonyms:** L1ORF1p; L1RE1; LRE1

**UNIPROT ID:** Q9UN81

**Background:** Nucleic acid-binding protein which is essential for retrotransposition of LINE-1 elements in the genome.

**Immunogen:** Recombinant protein of human LINE-1 ORF1p

**Applications:** WB,IP

**Recommended Dilutions:** WB: 1/500-1/1000 IP: 1/20

**Host Species:** Rabbit

**Clonality:** Rabbit Monoclonal

**Clone ID:** R01-0H7

**MW:** Calculated MW: 40 kDa; Observed MW: 40 kDa

**Isotype:** IgG

**Purification:** Affinity Purified

**Species Reactivity:** Human

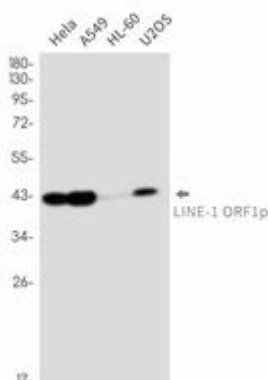
**Conjugation:** Unconjugated

**Modification:** Unmodified

**Constituents:** PBS (without Mg<sup>2+</sup> and Ca<sup>2+</sup>), pH 7.3 containing 50% glycerol, 0.5% BSA and 0.02% sodium azide

**Research Areas:** Epigenetics and Nuclear Signaling

**Storage & Shipping:** Store at -20°C. Avoid repeated freezing and thawing



Western blot analysis of LINE1 ORF1p in HeLa, A549, HL-60, U2OS lysates using LINE 1 ORF1p antibody.



# Product Description

Pioneering GTPase and Oncogene Product Development since 2010

---