

## LIS1 RABBIT MAB

**Cat.#:** N262470

**Product Name:** Anti-LIS1 Rabbit Monoclonal Antibody

**Synonyms:** MDS; LIS1; LIS2; MDCR; NudF; PAFAH

**UNIPROT ID:** P43034

**Background:** Required for proper activation of Rho GTPases and actin polymerization at the leading edge of locomoting cerebellar neurons and postmigratory hippocampal neurons in response to calcium influx triggered via NMDA receptors.

**Immunogen:** A synthetic peptide of human LIS1

**Applications:** WB,IP

**Recommended Dilutions:** WB: 1/500-1/1000 IP: 1/20

**Host Species:** Rabbit

**Clonality:** Rabbit Monoclonal

**Clone ID:** R03-210

**MW:** Calculated MW: 47 kDa; Observed MW: 47 kDa

**Isotype:** IgG

**Purification:** Affinity Purified

**Species Reactivity:** Hamster,Rat

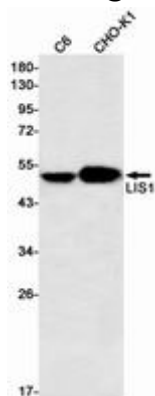
**Conjugation:** Unconjugated

**Modification:** Unmodified

**Constituents:** PBS (without Mg<sup>2+</sup> and Ca<sup>2+</sup>), pH 7.3 containing 50% glycerol, 0.5% BSA and 0.02% sodium azide

**Research Areas:** Neuroscience

**Storage & Shipping:** Store at -20°C. Avoid repeated freezing and thawing



Western blot analysis of LIS1 in C6, CHO-K1 lysates using LIS1 antibody.



# Product Description

Pioneering GTPase and Oncogene Product Development since 2010

---