

LMCD1 RABBIT PAB

Cat.#: S219084

Product Name: Anti-LMCD1 Rabbit Polyclonal Antibody

Synonyms:

UNIPROT ID: Q9NZU5 (Gene Accession - BC000646)

Background: This gene encodes a member of the LIM-domain family of zinc finger proteins. The encoded protein contains an N-terminal cysteine-rich domain and two C-terminal LIM domains. The presence of LIM domains suggests involvement in protein-protein interactions. The protein may act as a co-regulator of transcription along with other transcription factors. Alternate splicing results in multiple transcript variants of this gene.

Immunogen: Fusion protein of human LMCD1

Applications: ELISA, WB, IHC

Recommended Dilutions: IHC: 50-300;WB: 500-2000;ELISA: 5000-10000

Host Species: Rabbit

Clonality: Rabbit Polyclonal

Isotype: Immunogen-specific rabbit IgG

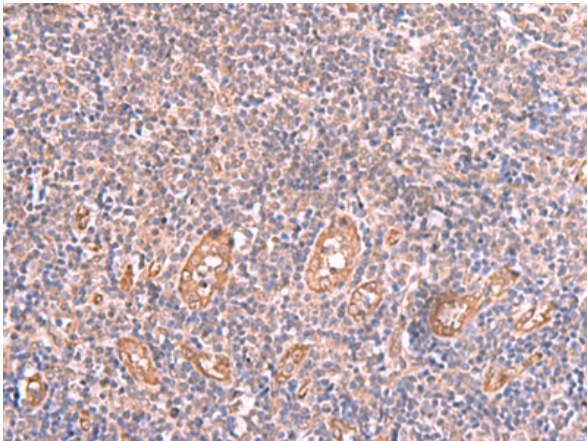
Purification: Antigen affinity purification

Species Reactivity: Human, Mouse

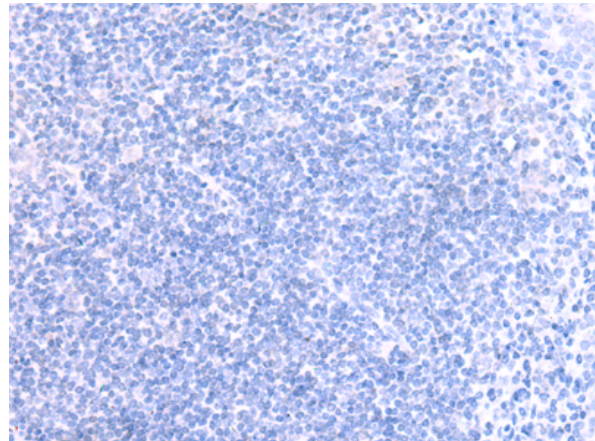
Constituents: PBS (without Mg²⁺ and Ca²⁺), pH 7.4, 150 mM NaCl, 0.05% Sodium Azide and 40% glycerol

Research Areas: Signal Transduction, Neuroscience

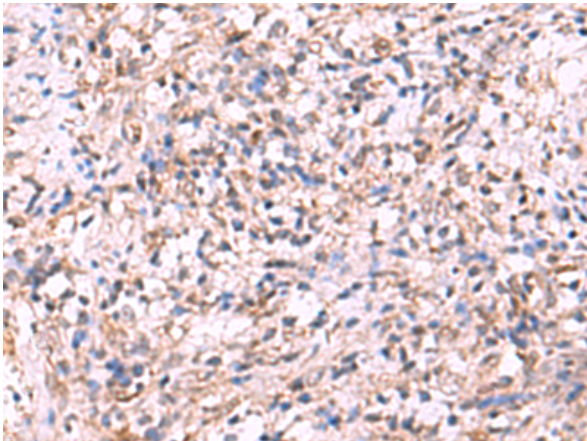
Storage & Shipping: Store at -20°C. Avoid repeated freezing and thawing



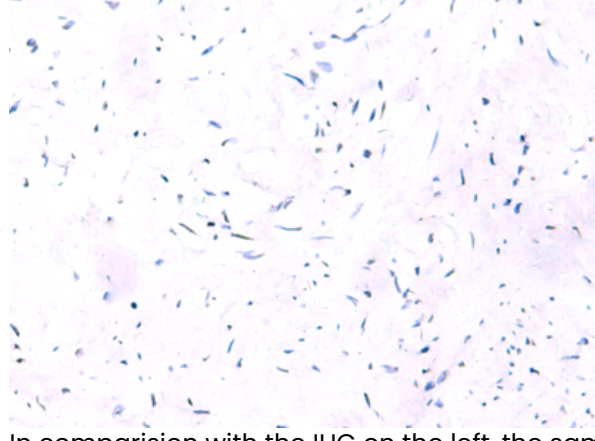
Immunohistochemistry analysis of paraffin embedded Human tonsil tissue using 219084(LMCD1 Antibody) at a dilution of 1/100(Cytoplasm).



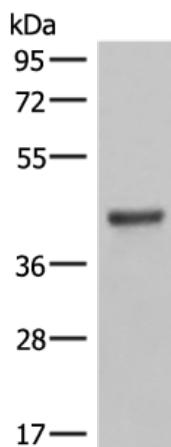
In comparison with the IHC on the left, the same paraffin-embedded Human tonsil tissue is first treated with the fusion protein and then with 219084(Anti-LMCD1 Antibody) at dilution 1/100.



The image on the left is immunohistochemistry of paraffin-embedded Human cervical cancer tissue using 219084(Anti-LMCD1 Antibody) at a dilution of 1/100.



In comparison with the IHC on the left, the same paraffin-embedded Human cervical cancer tissue is first treated with fusion protein and then with D225805(Anti-LMCD1 Antibody) at dilution 1/100.



Gel: 8%SDS-PAGE, Lysate: 40 µg;
Lane: Mouse lung tissue lysates;
Primary antibody: 219084(LMCD1 Antibody) at dilution 1/550;
Secondary antibody: Goat anti rabbit IgG at 1/8000 dilution;
Exposure time: 1 minute



Product Description

Pioneering GTPase and Oncogene Product Development since 2010
