

LMO2 RABBIT MAB

Cat.#: N262473

Product Name: Anti-LMO2 Rabbit Monoclonal Antibody

Synonyms: TTG2; LMO-2; RBTN2; RHOM2; RBTNLI

UNIPROT ID: P25791

Background: Acts with TAL1/SCL to regulate red blood cell development. Also acts with LDB1 to maintain erythroid precursors in an immature state.

Immunogen: A synthetic peptide of human LMO2

Applications: WB,IP

Recommended Dilutions: WB: 1/500-1/1000 IP: 1/20

Host Species: Rabbit

Clonality: Rabbit Monoclonal

Clone ID: R06-5F6

MW: Calculated MW: 18 kDa; Observed MW: 18 kDa

Isotype: IgG

Purification: Affinity Purified

Species Reactivity: Human

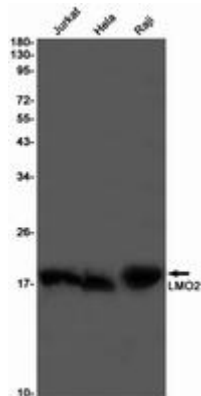
Conjugation: Unconjugated

Modification: Unmodified

Constituents: PBS (without Mg²⁺ and Ca²⁺), pH 7.3 containing 50% glycerol, 0.5% BSA and 0.02% sodium azide

Research Areas: Cardiovascular

Storage & Shipping: Store at -20°C. Avoid repeated freezing and thawing



Western blot analysis of LMO2 in Jurkat, HeLa, Raji lysates using LMO2 antibody.



Product Description

Pioneering GTPase and Oncogene Product Development since 2010
