

LMO2 RABBIT PAB

Cat.#: N225842

Product Name: Anti-LMO2 Rabbit pAb

Synonyms: TTG2; LMO-2; RBTN2; RHOM2; RBTNLI

UNIPROT ID: P25791

Background: Acts with TAL1/SCL to regulate red blood cell development. Also acts with LDB1 to maintain erythroid precursors in an immature state.

Immunogen: A synthesized peptide derived from human LMO2

Applications: WB,IP,FC

Recommended Dilutions: WB: 1/500-1/1000 IP: 1/20 FC: 1/50-1/100

Host Species: Rabbit

Clonality: Rabbit Polyclonal

Clone ID: -

MW: Calculated MW: 18 kDa; Observed MW: 18 kDa

Isotype: IgG

Purification: Affinity Chromatography

Species Reactivity: Human,Mouse,Rat

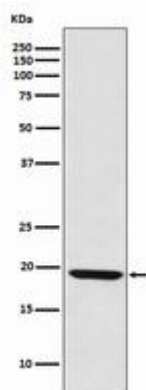
Conjugation: Unconjugated

Modification: Unmodified

Constituents: PBS (without Mg²⁺ and Ca²⁺), pH 7.3 containing 50% glycerol, 0.5% BSA and 0.02% sodium azide

Research Areas: Cardiovascular

Storage & Shipping: Store at -20°C. Avoid repeated freezing and thawing



Western blot analysis of LMO2 in Raji lysates using LMO2 antibody.