

LOXL4 RABBIT PAB

Cat.#: S217328

Product Name: Anti-LOXL4 Rabbit Polyclonal Antibody

Synonyms: LOXC

UNIPROT ID: Q96JB6 (Gene Accession - BC007522)

Background: This gene encodes a member of the lysyl oxidase gene family. The prototypic member of the family is essential to the biogenesis of connective tissue, encoding an extracellular copper-dependent amine oxidase that catalyses the first step in the formation of crosslinks in collagens and elastin. A highly conserved amino acid sequence at the C-terminus end appears to be sufficient for amine oxidase activity, suggesting that each family member may retain this function. The N-terminus is poorly conserved and may impart additional roles in developmental regulation, senescence, tumor suppression, cell growth control, and chemotaxis to each member of the family.

Immunogen: Fusion protein of human LOXL4

Applications: ELISA, IHC

Recommended Dilutions: IHC: 100-300; ELISA: 5000-10000

Host Species: Rabbit

Clonality: Rabbit Polyclonal

Isotype: Immunogen-specific rabbit IgG

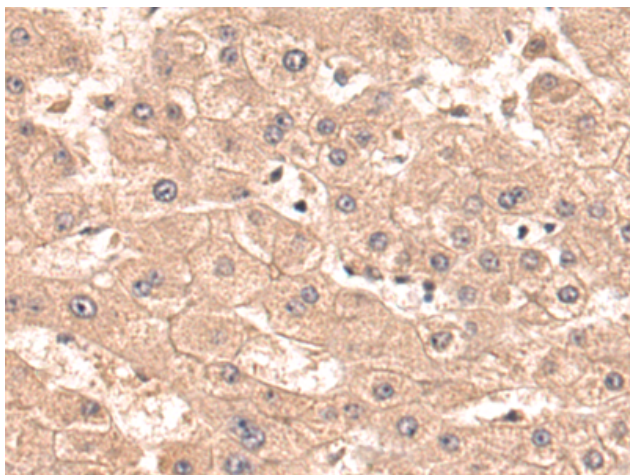
Purification: Antigen affinity purification

Species Reactivity: Human, Mouse

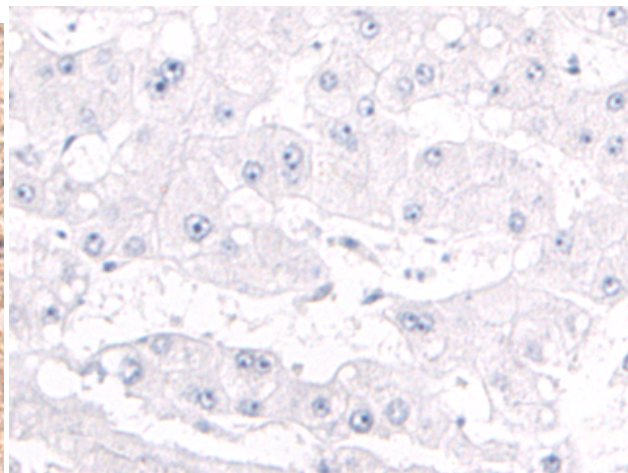
Constituents: PBS (without Mg²⁺ and Ca²⁺), pH 7.4, 150 mM NaCl, 0.05% Sodium Azide and 40% glycerol

Research Areas: Signal Transduction, Cardiovascular

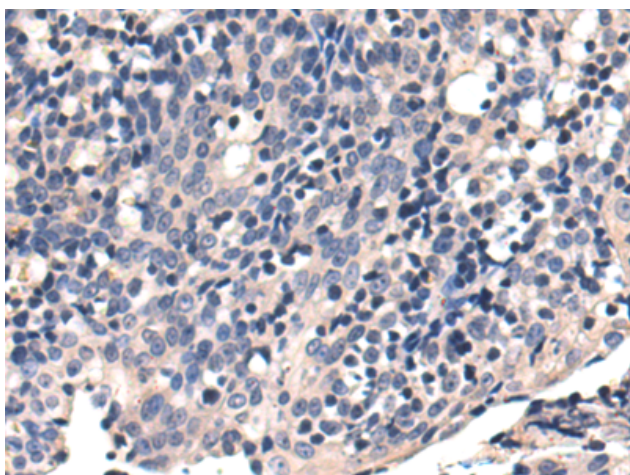
Storage & Shipping: Store at -20°C. Avoid repeated freezing and thawing



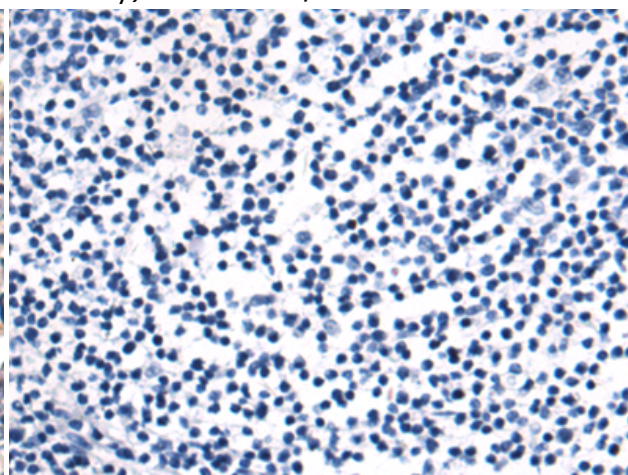
Immunohistochemistry analysis of paraffin embedded Human liver cancer tissue using 217328(LOXL4 Antibody) at a dilution of 1/100(Secreted).



In comparison with the IHC on the left, the same paraffin-embedded Human liver cancer tissue is first treated with the fusion protein and then with 217328(Anti-LOXL4 Antibody) at dilution 1/100.



The image on the left is immunohistochemistry of paraffin-embedded Human tonsil tissue using 217328(Anti-LOXL4 Antibody) at a dilution of 1/100.



In comparison with the IHC on the left, the same paraffin-embedded Human tonsil tissue is first treated with fusion protein and then with D222186(Anti-LOXL4 Antibody) at dilution 1/100.