

LPAR1 RABBIT PAB

Cat.#: S220245

Product Name: Anti-LPAR1 Rabbit Polyclonal Antibody

Synonyms: EDG2; LPA1; VZG1; GPR26; edg-2; vzg-1; Gpcr26; Mrec1.3; rec.1.3

UNIPROT ID: Q92633 (Gene Accession - NP_001392)

Background: The integral membrane protein encoded by this gene is a lysophosphatidic acid (LPA) receptor from a group known as EDG receptors. These receptors are members of the G protein-coupled receptor superfamily. Utilized by LPA for cell signaling, EDG receptors mediate diverse biologic functions, including proliferation, platelet aggregation, smooth muscle contraction, inhibition of neuroblastoma cell differentiation, chemotaxis, and tumor cell invasion.

Immunogen: Synthetic peptide of human LPAR1

Applications: ELISA, WB, IHC

Recommended Dilutions: IHC: 25-100;WB: 200-1000;ELISA: 1000-2000

Host Species: Rabbit

Clonality: Rabbit Polyclonal

Isotype: Immunogen-specific rabbit IgG

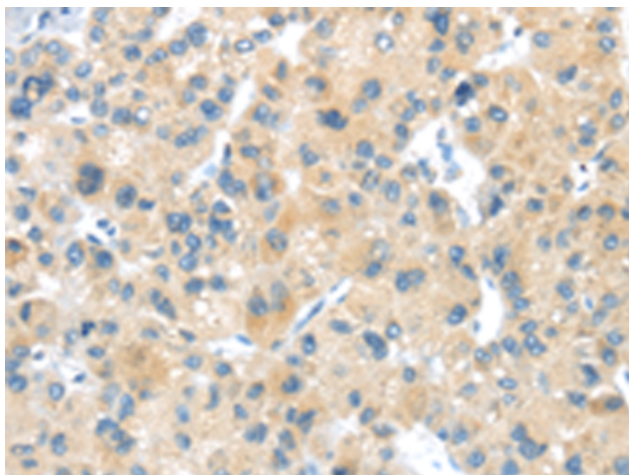
Purification: Antigen affinity purification

Species Reactivity: Human, Mouse, Rat

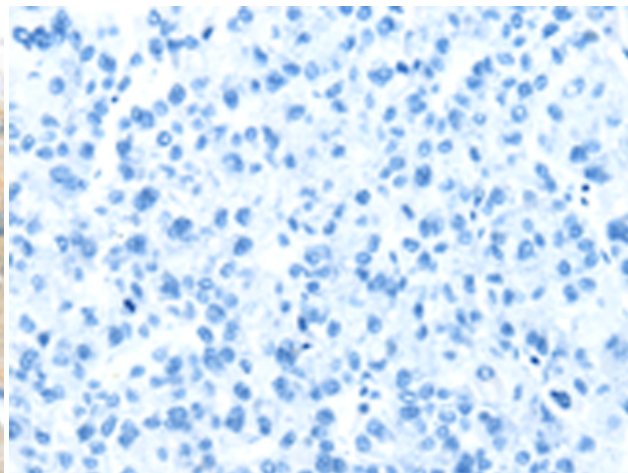
Constituents: PBS (without Mg²⁺ and Ca²⁺), pH 7.4, 150 mM NaCl, 0.05% Sodium Azide and 40% glycerol

Research Areas: Metabolism, Signal Transduction, Cardiovascular

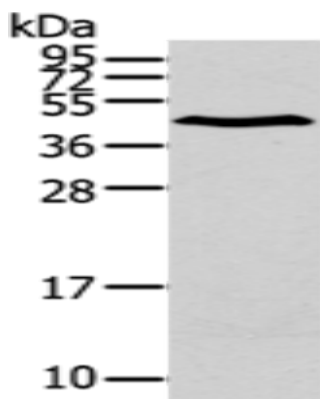
Storage & Shipping: Store at -20°C. Avoid repeated freezing and thawing



Immunohistochemistry analysis of paraffin embedded Human liver cancer tissue using 220245(LPAR1 Antibody) at a dilution of 1/20(Cell membrane).



In comparison with the IHC on the left, the same paraffin-embedded Human liver cancer tissue is first treated with the synthetic peptide and then with 220245(Anti-LPAR1 Antibody) at dilution 1/20.



Gel: 12%SDS-PAGE, Lysate: 40 μ g;
Lane: A375 cells;
Primary antibody: 220245(LPAR1 Antibody) at dilution 1/200;
Secondary antibody: Goat anti rabbit IgG at 1/8000 dilution;
Exposure time: 2 minutes