

LPAR5 RABBIT PAB

Cat.#: S220022

Product Name: Anti-LPAR5 Rabbit Polyclonal Antibody

Synonyms: LPA5; GPR92; GPR93; KPG_010

UNIPROT ID: Q9H1C0 (Gene Accession - NP_065133.1)

Background: This gene encodes a member of the rhodopsin class of G protein-coupled transmembrane receptors. This protein transmits extracellular signals from lysophosphatidic acid to cells through heterotrimeric G proteins and mediates numerous cellular processes. Many G protein receptors serve as targets for pharmaceutical drugs. Transcript variants of this gene have been described.

Immunogen: Synthetic peptide of human LPAR5

Applications: ELISA, IHC

Recommended Dilutions: IHC: 25-100; ELISA: 1000-5000

Host Species: Rabbit

Clonality: Rabbit Polyclonal

Isotype: Immunogen-specific rabbit IgG

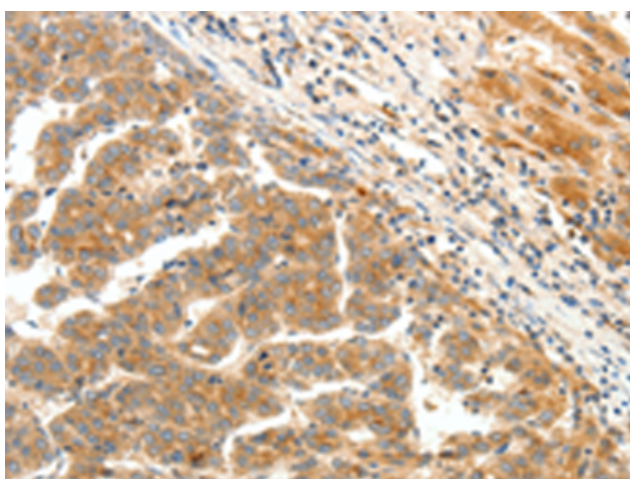
Purification: Antigen affinity purification

Species Reactivity: Human

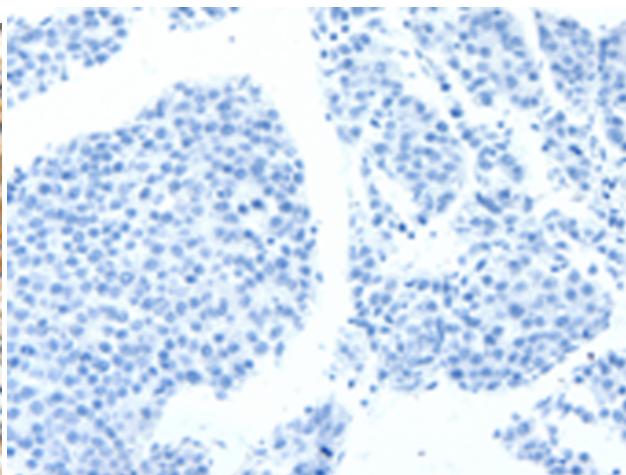
Constituents: PBS (without Mg²⁺ and Ca²⁺), pH 7.4, 150 mM NaCl, 0.05% Sodium Azide and 40% glycerol

Research Areas: Signal Transduction

Storage & Shipping: Store at -20°C. Avoid repeated freezing and thawing



Immunohistochemistry analysis of paraffin embedded Human liver cancer tissue using 220022(LPAR5 Antibody) at a dilution of 1/25(Cytoplasm).



In comparison with the IHC on the left, the same paraffin-embedded Human liver cancer tissue is first treated with the synthetic peptide and then with 220022(Anti-LPAR5 Antibody) at dilution 1/25.