

LPCAT2 RABBIT PAB

Cat.#: S218892

Product Name: Anti-LPCAT2 Rabbit Polyclonal Antibody

Synonyms: AYTL1; AGPAT11; LysoPAFAT

UNIPROT ID: Q7L5N7 (Gene Accession - BC002472)

Background: This gene encodes a member of the lysophospholipid acyltransferase family. The encoded enzyme may function in two ways: to catalyze the biosynthesis of platelet-activating factor (1-O-alkyl-2-acetyl-sn-glycero-3-phosphocholine) from 1-O-alkyl-sn-glycero-3-phosphocholine, and to catalyze the synthesis of glycerophospholipid precursors from arachidonyl-CoA and lysophosphatidylcholine. The encoded protein may function in membrane biogenesis and production of platelet-activating factor in inflammatory cells. The enzyme may localize to the endoplasmic reticulum and the Golgi.

Immunogen: Fusion protein of human LPCAT2

Applications: ELISA, WB, IHC

Recommended Dilutions: IHC: 100-300;WB: 200-1000;ELISA: 5000-10000

Host Species: Rabbit

Clonality: Rabbit Polyclonal

Isotype: Immunogen-specific rabbit IgG

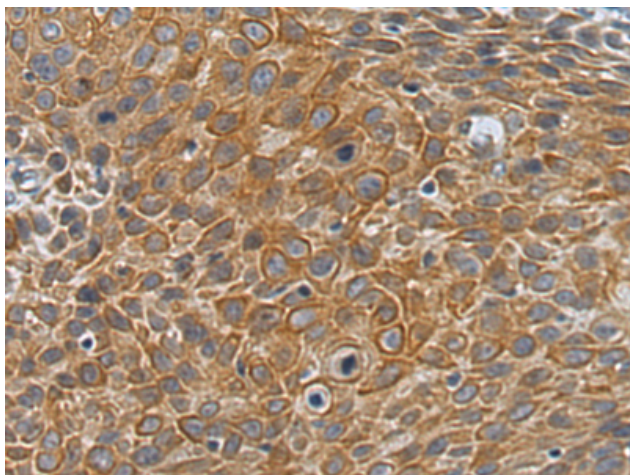
Purification: Antigen affinity purification

Species Reactivity: Human, Mouse, Rat

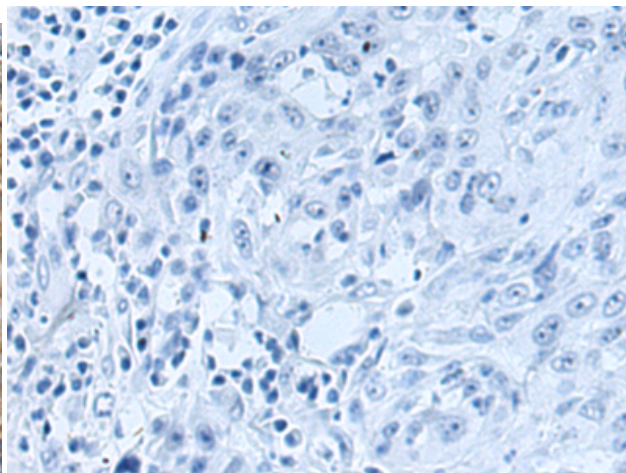
Constituents: PBS (without Mg²⁺ and Ca²⁺), pH 7.4, 150 mM NaCl, 0.05% Sodium Azide and 40% glycerol

Research Areas: Metabolism

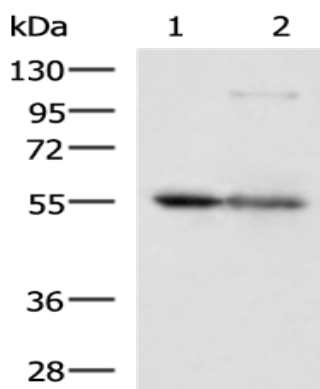
Storage & Shipping: Store at -20°C. Avoid repeated freezing and thawing



Immunohistochemistry analysis of paraffin embedded Human esophagus cancer tissue using 218892(LPCAT2 Antibody) at a dilution of 1/120(Cytoplasm).



In comparison with the IHC on the left, the same paraffin-embedded Human esophagus cancer tissue is first treated with the fusion protein and then with 218892(Anti-LPCAT2 Antibody) at dilution 1/120.



Gel: 8%SDS-PAGE, Lysate: 40 µg;

Lane 1-2: Mouse liver tissue, Hela cell lysates;

Primary antibody: 218892(LPCAT2 Antibody) at dilution 1/400;

Secondary antibody: HRP-conjugated Goat anti rabbit IgG at 1/5000 dilution;

Exposure time: 20 seconds