

LPP (6F6) MOUSE MAB

Cat.#: N261183

Product Name: Anti-LPP (6F6) Mouse Monoclonal Antibody

Synonyms: LPP; Lipoma-preferred partner; LIM domain-containing preferred translocation partner in lipoma

UNIPROT ID: Q93052

Background: May play a structural role at sites of cell adhesion in maintaining cell shape and motility. In addition to these structural functions, it may also be implicated in signaling events and activation of gene transcription.

Immunogen: Purified recombinant fragment of human LPP expressed in E. Coli.

Applications: WB,IHC-F,IHC-P,ICC/IF,IP

Recommended Dilutions: WB: 1/500-1/1000 IHC: 1/50-1/100 IF: 1/50-1/200 IP: 1/20

Host Species: Mouse

Clonality: Mouse Monoclonal

Clone ID: 6F6-C1-B6

MW: Calculated MW: 66 kDa; Observed MW: 66 kDa

Isotype: IgG1

Purification: Ascitic Fluid

Species Reactivity: Human,Mouse,Rat,Monkey,Hamster

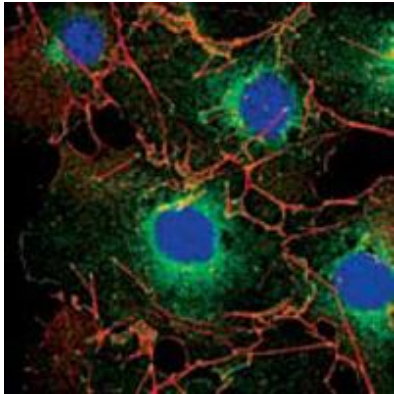
Conjugation: Unconjugated

Modification: Unmodified

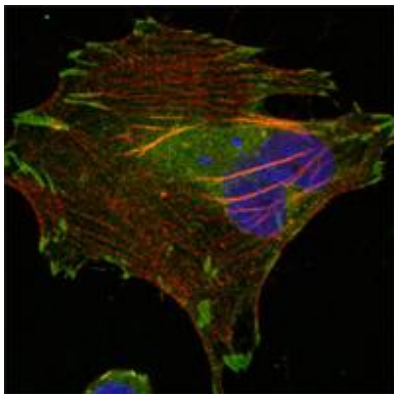
Constituents: PBS (without Mg²⁺ and Ca²⁺), pH 7.3 containing 50% glycerol, 0.5% BSA and 0.02% sodium azide

Research Areas: Signal Transduction

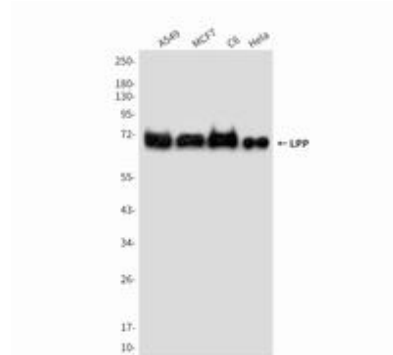
Storage & Shipping: Store at -20°C. Avoid repeated freezing and thawing



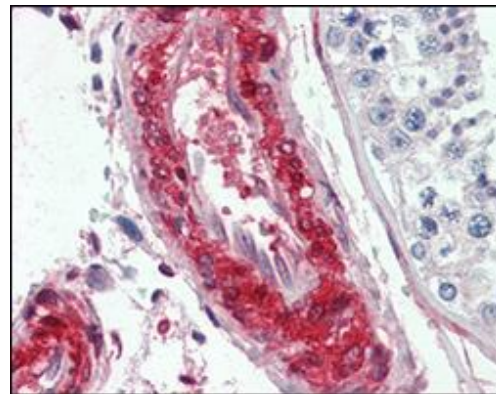
Immunofluorescence analysis of LPP (6F6) in COS using LPP antibody (green). Red: Actin filaments have been labeled using DY554 phalloidin. Blue: DRAQ5 fluorescent DNA dye.



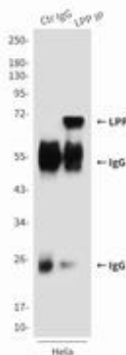
Immunofluorescence analysis of LPP (6F6) in HeLa cells using LPP antibody (green). Red: Actin filaments have been labeled using DY554 phalloidin, and DAPI (blue). DRAQ5 fluorescent DNA dye.



Western blot analysis of LPP in A549, MCF-7, C6 and HeLa lysates using LPP antibody.



Immunohistochemistry analysis of paraffin-embedded human vessel tissues using LPP antibody. High-pressure and temperature Sodium Citrate pH 6.0 was used for antigen retrieval.



Immunoprecipitation analysis of LPP in HeLa lysates using LPP (6F6) antibody.



Product Description

Pioneering GTPase and Oncogene Product Development since 2010
