

LRATD2 RABBIT PAB

Cat.#: S222013

Product Name: Anti-LRATD2 Rabbit Polyclonal Antibody

Synonyms: NSE2; FAM84B; BCMP101

UNIPROT ID: Q96KNI (Gene Accession - NP_777571)

Background: FAM84B (family with sequence similarity 84, member B), also known as NSE2 or BCMP101, is a 310 amino acid protein that is expressed in esophageal squamous cell carcinomas, suggesting a role in tumor development and metastasis. The gene encoding FAM84B maps to human chromosome 8, which consists of nearly 146 million base pairs, houses more than 800 genes and is associated with a variety of diseases and malignancies. Schizophrenia, bipolar disorder, trisomy 8, Pfeiffer syndrome, congenital hypothyroidism, Waardenburg syndrome and some leukemias and lymphomas are thought to occur as a result of defects in specific genes that map to chromosome 8.

Immunogen: Synthetic peptide of human LRATD2

Applications: ELISA, WB, IHC

Recommended Dilutions: IHC: 40-200;WB: 500-2000;ELISA: 5000-10000

Host Species: Rabbit

Clonality: Rabbit Polyclonal

Isotype: Immunogen-specific rabbit IgG

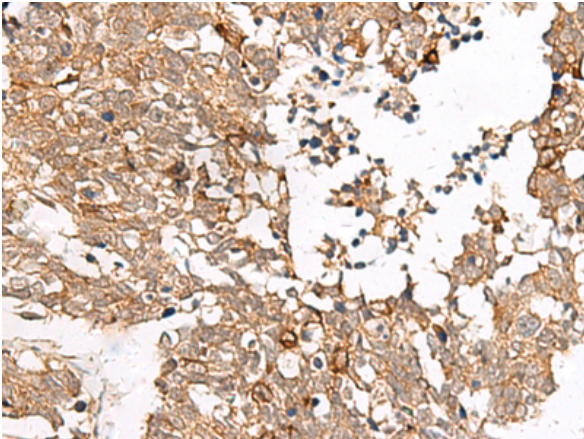
Purification: Antigen affinity purification

Species Reactivity: Human

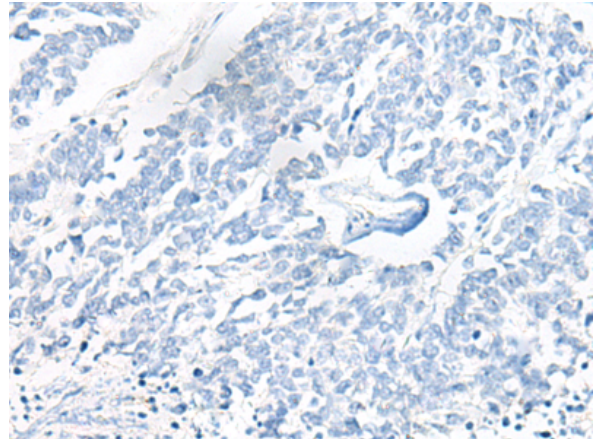
Constituents: PBS (without Mg²⁺ and Ca²⁺), pH 7.4, 150 mM NaCl, 0.05% Sodium Azide and 40% glycerol

Research Areas: Cell Biology, Neuroscience

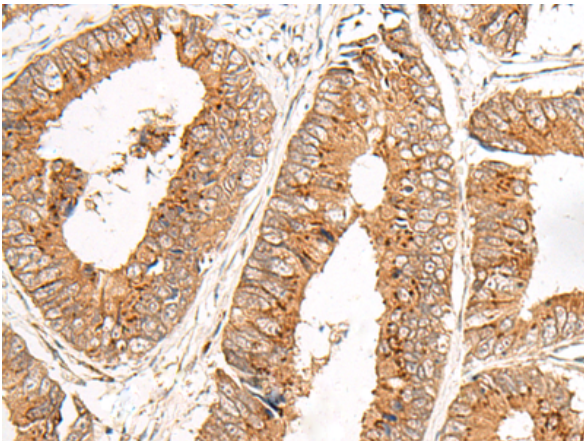
Storage & Shipping: Store at -20°C. Avoid repeated freezing and thawing



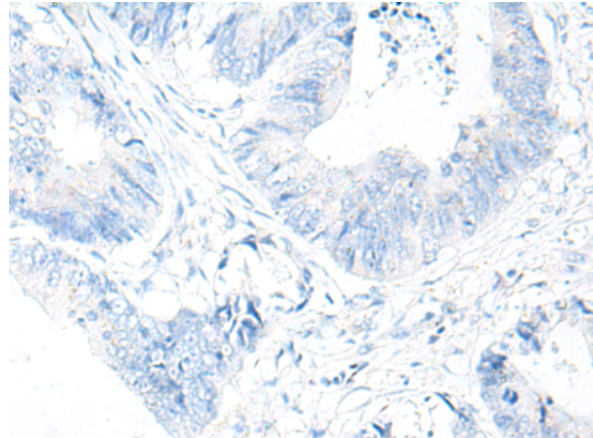
Immunohistochemistry analysis of paraffin embedded Human lung cancer tissue using 222013(LRATD2 Antibody) at a dilution of 1/45(Cytoplasm and Nucleus).



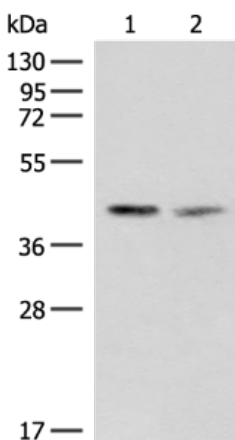
In comparison with the IHC on the left, the same paraffin-embedded Human lung cancer tissue is first treated with the synthetic peptide and then with 222013(Anti-LRATD2 Antibody) at dilution 1/45.



The image on the left is immunohistochemistry of paraffin-embedded Human colorectal cancer tissue using 222013(Anti-LRATD2 Antibody) at a dilution of 1/45.



In comparison with the IHC on the left, the same paraffin-embedded Human colorectal cancer tissue is first treated with synthetic peptide and then with D263881(Anti-LRATD2 Antibody) at dilution 1/45.



Gel: 8%SDS-PAGE, Lysate: 40 µg;
Lane 1-2: PC3 and HUVEC cell lysates;
Primary antibody: 222013(LRATD2 Antibody) at dilution 1/400;
Secondary antibody: Goat anti rabbit IgG at 1/8000 dilution;
Exposure time: 30 seconds



Product Description

Pioneering GTPase and Oncogene Product Development since 2010
