

## LRIG1 RABBIT PAB

**Cat.#:** S219894

**Product Name:** Anti-LRIG1 Rabbit Polyclonal Antibody

**Synonyms:** LIG1; LIG-1

**UNIPROT ID:** Q96JAI (Gene Accession - NP\_056356 )

**Background:** Predicted to act upstream of or within several processes, including innervation; otolith morphogenesis; and sensory perception of sound. Predicted to be located in plasma membrane. Predicted to be active in extracellular matrix and extracellular space.

**Immunogen:** Synthetic peptide of human LRIG1

**Applications:** ELISA, WB, IHC

**Recommended Dilutions:** IHC: 100-300;WB: 1000-5000;ELISA: 5000-10000

**Host Species:** Rabbit

**Clonality:** Rabbit Polyclonal

**Isotype:** Immunogen-specific rabbit IgG

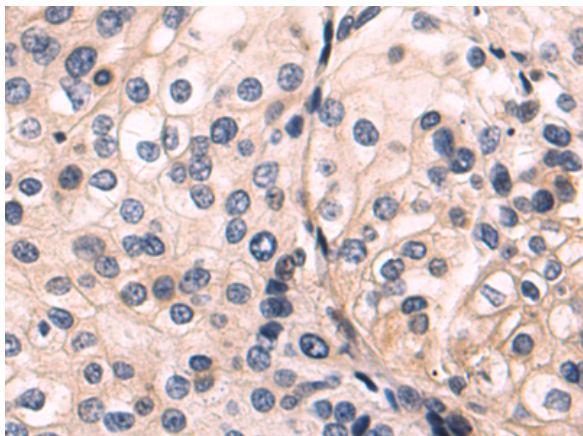
**Purification:** Antigen affinity purification

**Species Reactivity:** Human, Mouse

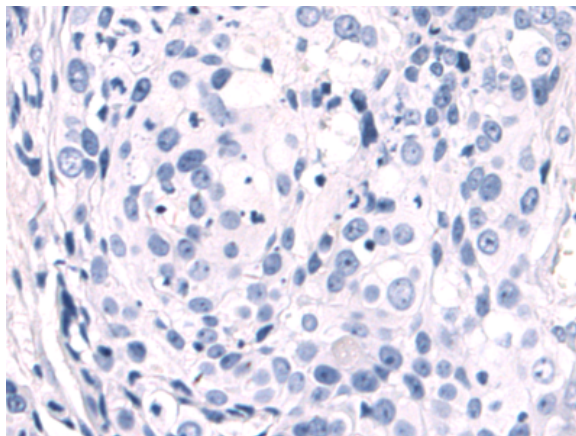
**Constituents:** PBS (without Mg<sup>2+</sup> and Ca<sup>2+</sup>), pH 7.4, 150 mM NaCl, 0.05% Sodium Azide and 40% glycerol

**Research Areas:** Cancer

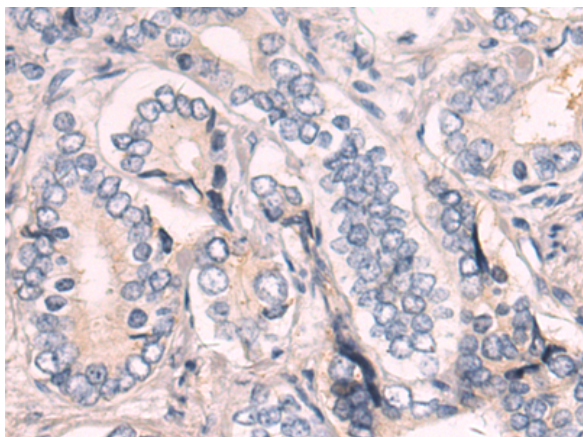
**Storage & Shipping:** Store at -20°C. Avoid repeated freezing and thawing



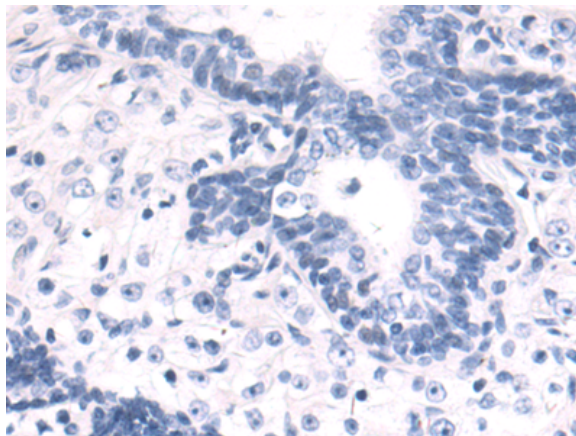
Immunohistochemistry analysis of paraffin embedded Human cervical cancer tissue using 219894(LRIG1 Antibody) at a dilution of 1/95(Cytoplasm).



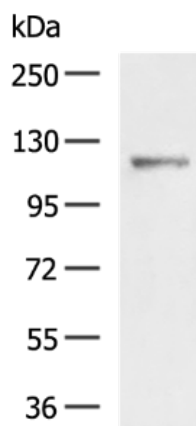
In comparison with the IHC on the left, the same paraffin-embedded Human cervical cancer tissue is first treated with the synthetic peptide and then with 219894(Anti-LRIG1 Antibody) at dilution 1/95.



The image on the left is immunohistochemistry of paraffin-embedded Human prostate cancer tissue using 219894(Anti-LRIG1 Antibody) at a dilution of 1/95.



In comparison with the IHC on the left, the same paraffin-embedded Human prostate cancer tissue is first treated with synthetic peptide and then with D260563(Anti-LRIG1 Antibody) at dilution 1/95.



Gel: 6%SDS-PAGE, Lysate: 40 µg;  
Lane: Mouse skeletal muscle tissue lysate;  
Primary antibody: 219894(LRIG1 Antibody) at dilution 1/1300;  
Secondary antibody: HRP-conjugated Goat anti rabbit IgG at 1/5000 dilution;  
Exposure time: 10 seconds



# Product Description

Pioneering GTPase and Oncogene Product Development since 2010

---