

## LRIG3 RABBIT PAB

**Cat.#:** S213638

**Product Name:** Anti-LRIG3 Rabbit Polyclonal Antibody

**Synonyms:** LIG3

**UNIPROT ID:** Q6UXM1 (Gene Accession - NP\_700356 )

**Background:** Leucine-rich repeats and immunoglobulin-like domains 3 (Lrig3) was identified by microarray analysis among genes that show differential expression during gastrulation in *Xenopus laevis*. Lrig3 was expressed in the neural plate and neural crest (NC) at neurula stages, and in NC derivatives and other dorsal structures during tailbud stages. A prominent consequence of the morpholino-induced inhibition of Lrig3 expression was impaired NC formation, as revealed by the suppression of marker genes, including Slug, Sox9 and Foxd3.

**Immunogen:** Synthetic peptide of human LRIG3

**Applications:** ELISA, IHC

**Recommended Dilutions:** IHC: 25-100; ELISA: 1000-5000

**Host Species:** Rabbit

**Clonality:** Rabbit Polyclonal

**Isotype:** Immunogen-specific rabbit IgG

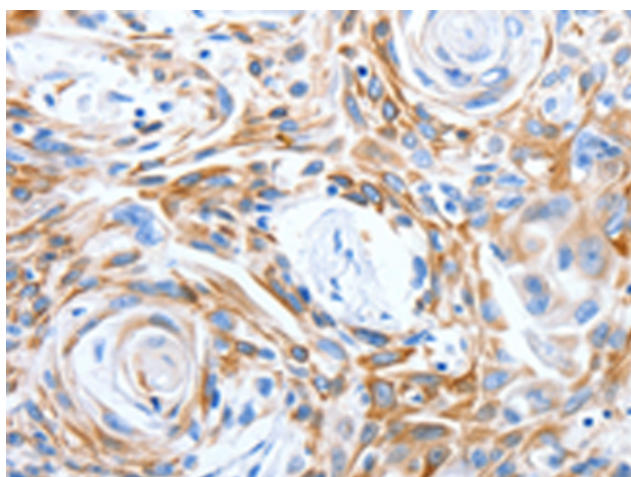
**Purification:** Antigen affinity purification

**Species Reactivity:** Human

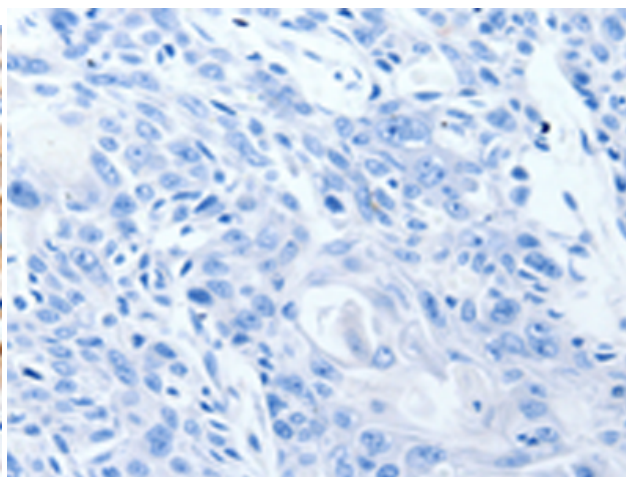
**Constituents:** PBS (without Mg<sup>2+</sup> and Ca<sup>2+</sup>), pH 7.4, 150 mM NaCl, 0.05% Sodium Azide and 40% glycerol

**Research Areas:** Cancer, Neuroscience, Stem Cells, Developmental Biology

**Storage & Shipping:** Store at -20°C. Avoid repeated freezing and thawing



Immunohistochemistry analysis of paraffin embedded Human esophagus cancer tissue using 213638(LRIG3 Antibody) at a dilution of 1/50(Cytoplasm).



In comparison with the IHC on the left, the same paraffin-embedded Human esophagus cancer tissue is first treated with the synthetic peptide and then with 213638(Anti-LRIG3 Antibody) at dilution 1/50.