

LRP1 RABBIT MAB

Cat.#: N261644

Product Name: Anti-LRP1 Rabbit Monoclonal Antibody

Synonyms: A2MR; alpha 2MR; Alpha 2 macroglobulin receptor; CD91; APR; LRP1; LRP85; TGFBR5

UNIPROT ID: Q07954

Background: Endocytic receptor involved in endocytosis and in phagocytosis of apoptotic cells. Required for early embryonic development. Involved in cellular lipid homeostasis. Involved in the plasma clearance of chylomicron remnants and activated LRPAP1 (alpha 2-macroglobulin), as well as the local metabolism of complexes between plasminogen activators and their endogenous inhibitors. May modulate cellular events, such as APP metabolism, kinase-dependent intracellular signaling, neuronal calcium signaling as well as neurotransmission. Functions as a receptor for *Pseudomonas aeruginosa* exotoxin A.

Immunogen: A synthetic peptide of human LRP1

Applications: WB, IHC-F, IHC-P, ICC/IF, IP

Recommended Dilutions: WB: 1/500-1/1000 IHC: 1/50-1/100 IF: 1/50-1/200 IP: 1/20

Host Species: Rabbit

Clonality: Rabbit Monoclonal

Clone ID: R09-4E8

MW: Calculated MW: 505 kDa; Observed MW: 85 kDa

Isotype: IgG

Purification: Affinity Purified

Species Reactivity: Human, Mouse, Rat

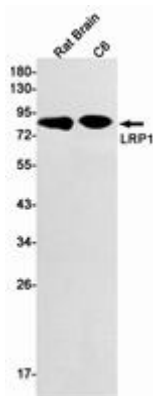
Conjugation: Unconjugated

Modification: Unmodified

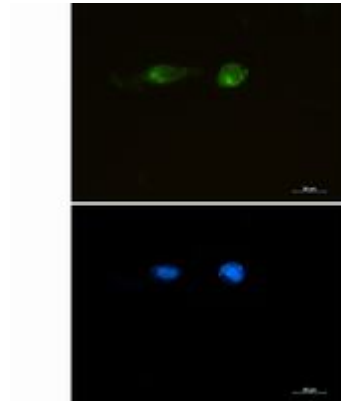
Constituents: PBS (without Mg²⁺ and Ca²⁺), pH 7.3 containing 50% glycerol, 0.5% BSA and 0.02% sodium azide

Research Areas: Neuroscience

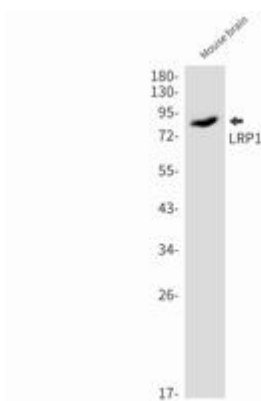
Storage & Shipping: Store at -20°C. Avoid repeated freezing and thawing



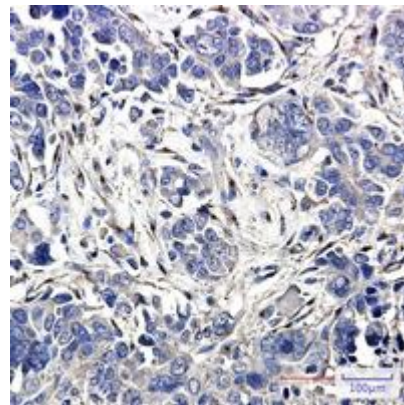
Western blot analysis of LRP1 in rat Brain, C6 lysates using LRP1 antibody



Immunocytochemistry analysis of LRP1 (green) in U87-MG using LRP1 antibody, and DAPI (blue).



Western blot analysis of LRP1 in mouse brain lysates using LRP1 antibody.



Immunohistochemistry analysis of paraffin-embedded Human Cholangiocarcinoma using LRP1 antibody. High-pressure and temperature Sodium Citrate pH 6.0 was used for antigen retrieval.