

LRP5 RABBIT PAB

Cat.#: S219895

Product Name: Anti-LRP5 Rabbit Polyclonal Antibody

Synonyms: HBM, LR3, OPS, EVR1, EVR4, LRP7, OPPG, BMND1, OPTA1, VBCH2

UNIPROT ID: O75197 (Gene Accession - NP_002326)

Background: This gene encodes a transmembrane low-density lipoprotein receptor that binds and internalizes ligands in the process of receptor-mediated endocytosis. This protein also acts as a co-receptor with Frizzled protein family members for transducing signals by Wnt proteins and was originally cloned on the basis of its association with type 1 diabetes mellitus in humans. This protein plays a key role in skeletal homeostasis and many bone density related diseases are caused by mutations in this gene. Mutations in this gene also cause familial exudative vitreoretinopathy.

Immunogen: Synthetic peptide of human LRP5

Applications: ELISA, IHC

Recommended Dilutions: IHC: 100-300; ELISA: 2000-10000

Host Species: Rabbit

Clonality: Rabbit Polyclonal

Isotype: Immunogen-specific rabbit IgG

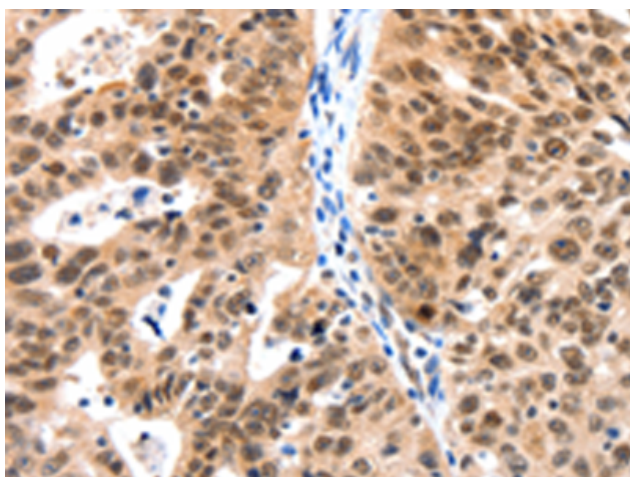
Purification: Antigen affinity purification

Species Reactivity: Human, Mouse

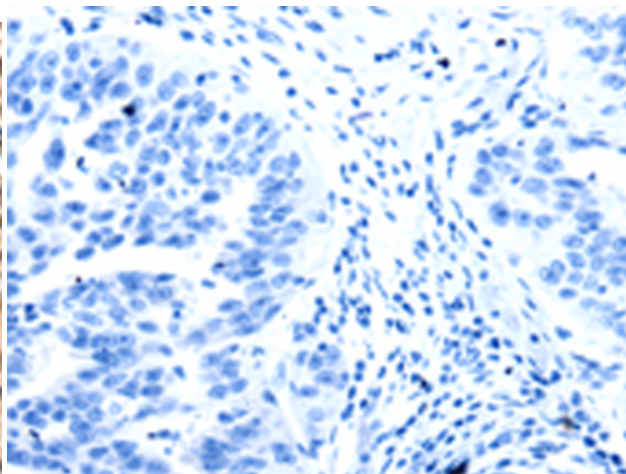
Constituents: PBS (without Mg²⁺ and Ca²⁺), pH 7.4, 150 mM NaCl, 0.05% Sodium Azide and 40% glycerol

Research Areas: Signal Transduction, Metabolism, Neuroscience, Cardiovascular

Storage & Shipping: Store at -20°C. Avoid repeated freezing and thawing



Immunohistochemistry analysis of paraffin embedded Human ovarian cancer tissue using 219895(LRP5 Antibody) at a dilution of 1/115(Cytoplasm, Nucleus).



In comparison with the IHC on the left, the same paraffin-embedded Human ovarian cancer tissue is first treated with the synthetic peptide and then with 219895(Anti-LRP5 Antibody) at dilution 1/115.