

## LRPAP1 RABBIT PAB

**Cat.#:** S213641

**Product Name:** Anti-LRPAP1 Rabbit Polyclonal Antibody

**Synonyms:** RAP, MRAP, A2RAP, HBP44, A2MRAP

**UNIPROT ID:** P30533 (Gene Accession - NP\_002328 )

**Background:** Low density lipoprotein receptor-related protein associated protein 1 also known as LRPAP1 or RAP is a chaperone protein which in humans is encoded by the LRPAP1 gene. LRPAP1 is involved with trafficking of certain members of the LDL receptor family including LRP1 and LRP2. It is a glycoprotein that binds to the alpha-2-macroglobulin receptor, as well as to other members of the low density lipoprotein receptor family. It acts to inhibit the binding of all know ligands for these receptors, and may prevent receptor aggregation and degradation in the endoplasmic reticulum, thereby acting as a molecular chaperone. It may be under the regulatory control of calmodulin, since it is able to bind calmodulin and be phosphorylated by calmodulin-dependent kinase II.

**Immunogen:** Synthetic peptide of human LRPAP1

**Applications:** ELISA, WB, IHC

**Recommended Dilutions:** IHC: 50-200;WB: 500-2000;ELISA: 1000-5000

**Host Species:** Rabbit

**Clonality:** Rabbit Polyclonal

**Isotype:** Immunogen-specific rabbit IgG

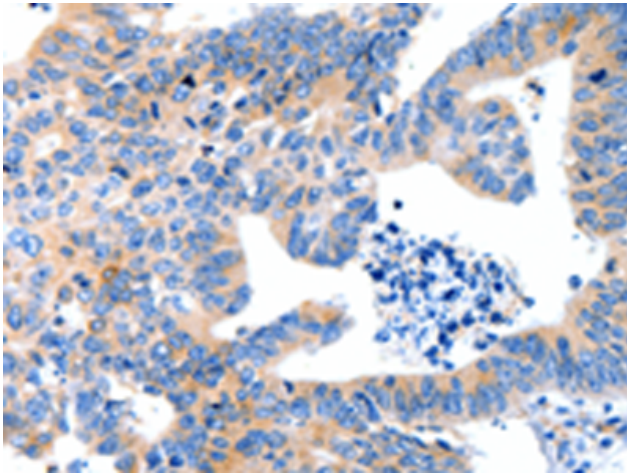
**Purification:** Antigen affinity purification

**Species Reactivity:** Human, Mouse, Rat

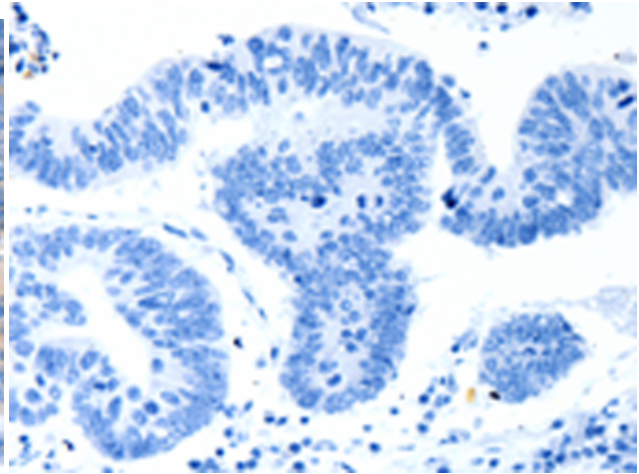
**Constituents:** PBS (without Mg<sup>2+</sup> and Ca<sup>2+</sup>), pH 7.4, 150 mM NaCl, 0.05% Sodium Azide and 40% glycerol

**Research Areas:** Signal Transduction, Metabolism, Cardiovascular

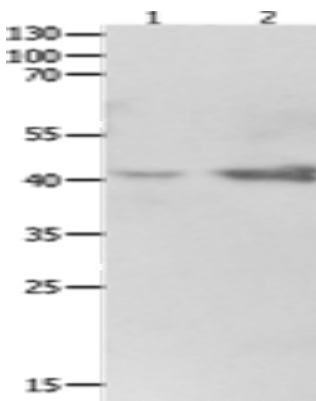
**Storage & Shipping:** Store at -20°C. Avoid repeated freezing and thawing



Immunohistochemistry analysis of paraffin embedded Human colon cancer tissue using 213641(LRPAP1 Antibody) at a dilution of 1/100(Cytoplasm).



In comparison with the IHC on the left, the same paraffin-embedded Human colon cancer tissue is first treated with the synthetic peptide and then with 213641(Anti-LRPAP1 Antibody) at dilution 1/100.



Gel: 10%SDS-PAGE, Lysate: 40 µg;  
Lane 1-2: 293T cells, Human fetal kidney tissue;  
Primary antibody: 213641(LRPAP1 Antibody) at dilution 1/1600;  
Secondary antibody: Goat anti rabbit IgG at 1/8000 dilution;  
Exposure time: 2 minutes