

LRPPRC RABBIT PAB

Cat.#: S219897

Product Name: Anti-LRPPRC Rabbit Polyclonal Antibody

Synonyms: LSFC, GPI30, LRP130, CLONE-23970

UNIPROT ID: P42704 (Gene Accession - NP_573566)

Background: This gene encodes a leucine-rich protein that has multiple pentatricopeptide repeats (PPR). The precise role of this protein is unknown but studies suggest it may play a role in cytoskeletal organization, vesicular transport, or in transcriptional regulation of both nuclear and mitochondrial genes. The protein localizes primarily to mitochondria and is predicted to have an N-terminal mitochondrial targeting sequence. Mutations in this gene are associated with the French-Canadian type of Leigh syndrome.

Immunogen: Synthetic peptide of human LRPPRC

Applications: ELISA, IHC

Recommended Dilutions: IHC: 15-50; ELISA: 1000-2000

Host Species: Rabbit

Clonality: Rabbit Polyclonal

Isotype: Immunogen-specific rabbit IgG

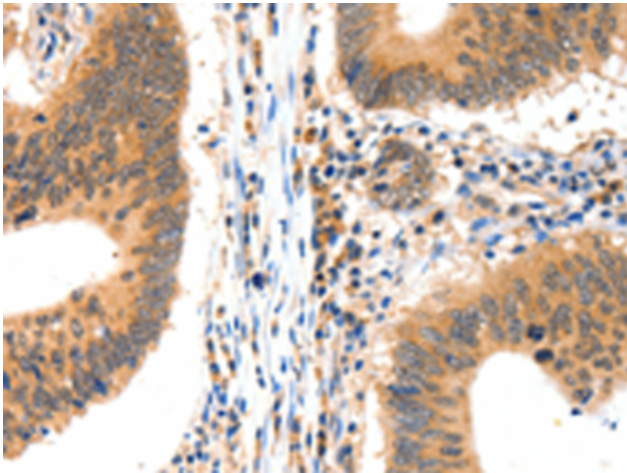
Purification: Antigen affinity purification

Species Reactivity: Human, Mouse, Rat

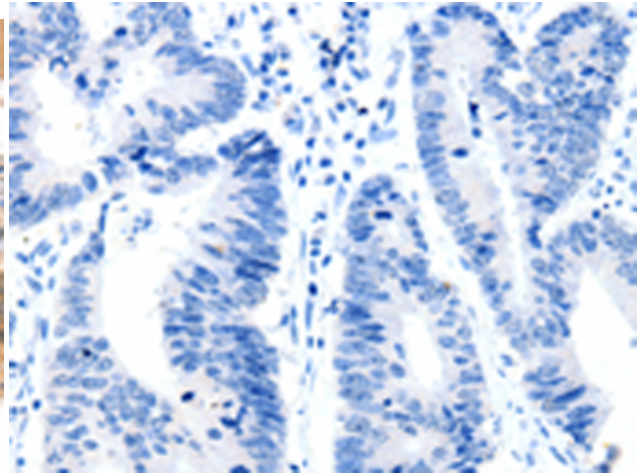
Constituents: PBS (without Mg²⁺ and Ca²⁺), pH 7.4, 150 mM NaCl, 0.05% Sodium Azide and 40% glycerol

Research Areas: Epigenetics and Nuclear Signaling, Neuroscience

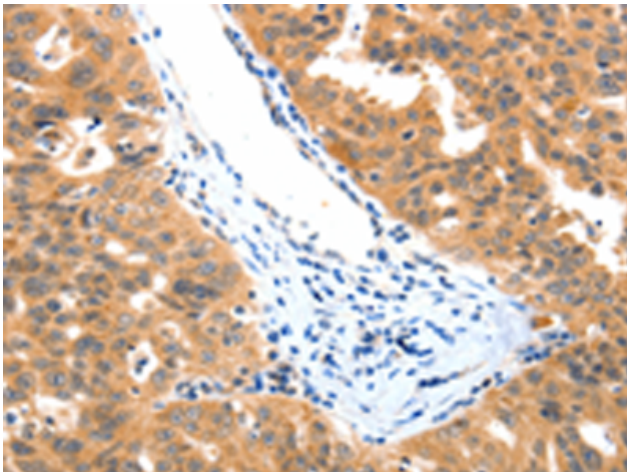
Storage & Shipping: Store at -20°C. Avoid repeated freezing and thawing



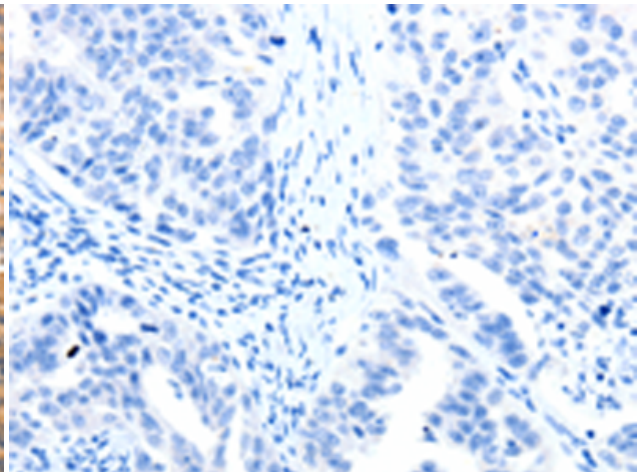
Immunohistochemistry analysis of paraffin embedded Human colon cancer tissue using 219897(LRPPRC Antibody) at a dilution of 1/15(Cytoplasm).



In comparison with the IHC on the left, the same paraffin-embedded Human colon cancer tissue is first treated with the synthetic peptide and then with 219897(Anti-LRPPRC Antibody) at dilution 1/15.



The image on the left is immunohistochemistry of paraffin-embedded Human ovarian cancer tissue using 219897(Anti-LRPPRC Antibody) at a dilution of 1/15.



In comparison with the IHC on the left, the same paraffin-embedded Human ovarian cancer tissue is first treated with synthetic peptide and then with D260570(Anti-LRPPRC Antibody) at dilution 1/15.