

LRRC15 RABBIT PAB

Cat.#: S217580

Product Name: Anti-LRRC15 Rabbit Polyclonal Antibody

Synonyms: LIB

UNIPROT ID: Q8TF66 (Gene Accession - BC101065)

Background: Enables collagen binding activity; fibronectin binding activity; and laminin binding activity. Involved in negative regulation of protein localization to plasma membrane; positive regulation of cell migration; and receptor-mediated virion attachment to host cell. Located in extracellular exosome. Colocalizes with collagen-containing extracellular matrix.

Immunogen: Fusion protein of human LRRC15

Applications: ELISA, IHC

Recommended Dilutions: IHC: 50-100; ELISA: 5000-10000

Host Species: Rabbit

Clonality: Rabbit Polyclonal

Isotype: Immunogen-specific rabbit IgG

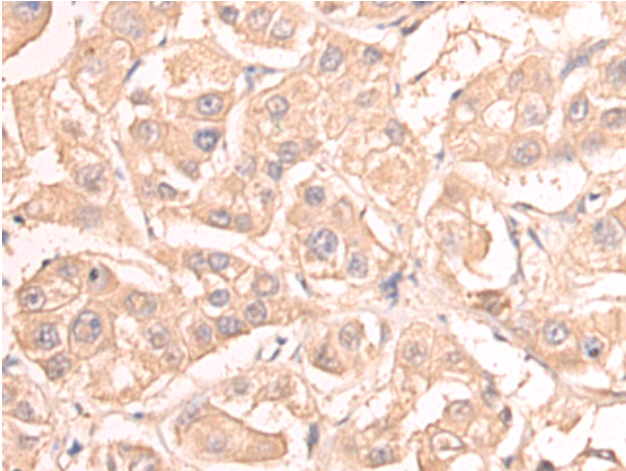
Purification: Antigen affinity purification

Species Reactivity: Human, Mouse, Rat

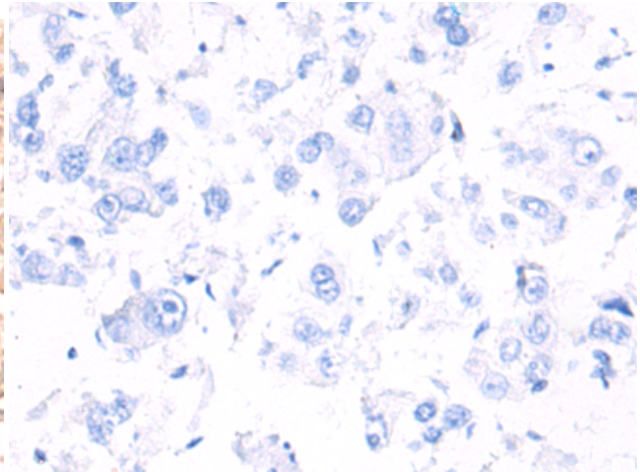
Constituents: PBS (without Mg²⁺ and Ca²⁺), pH 7.4, 150 mM NaCl, 0.05% Sodium Azide and 40% glycerol

Research Areas: Cancer, Neuroscience

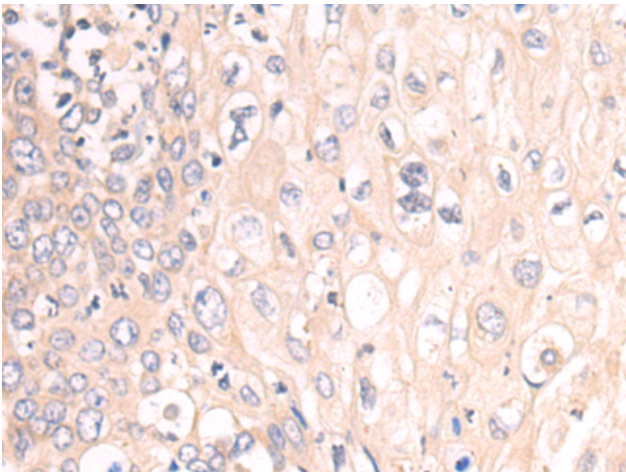
Storage & Shipping: Store at -20°C. Avoid repeated freezing and thawing



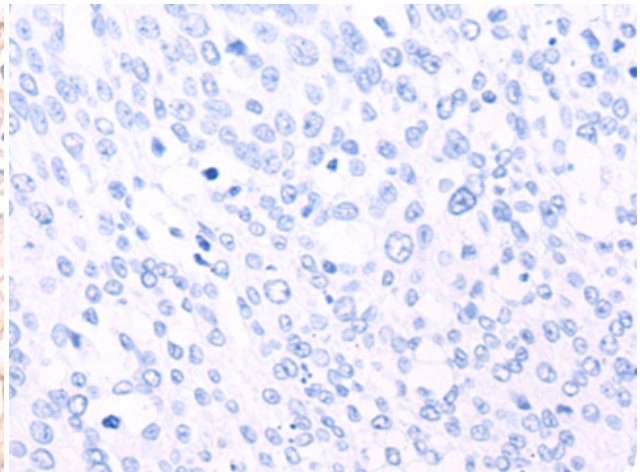
Immunohistochemistry analysis of paraffin embedded Human colorectal cancer tissue using 217580(LRRC15 Antibody) at a dilution of 1/50(Cytoplasm and Cell membrane).



In comparison with the IHC on the left, the same paraffin-embedded Human colorectal cancer tissue is first treated with the fusion protein and then with 217580(Anti-LRRC15 Antibody) at dilution 1/50.



The image on the left is immunohistochemistry of paraffin-embedded Human cervical cancer tissue using 217580(Anti-LRRC15 Antibody) at a dilution of 1/50.



In comparison with the IHC on the left, the same paraffin-embedded Human cervical cancer tissue is first treated with fusion protein and then with D222627(Anti-LRRC15 Antibody) at dilution 1/50.