

LRRC4 RABBIT PAB

Cat.#: S221457

Product Name: Anti-LRRC4 Rabbit Polyclonal Antibody

Synonyms: NAG14; NGL-2

UNIPROT ID: Q9HBW1 (Gene Accession - NP_071426)

Background: This gene is significantly downregulated in primary brain tumors. Synaptic adhesion protein. Regulates the formation of excitatory synapses through the recruitment of pre-and-postsynaptic proteins. Organize the lamina/pathway-specific differentiation of dendrites. Plays a important role for auditory synaptic responses. Involved in the suppression of glioma (By similarity).

Immunogen: Synthetic peptide of human LRRC4

Applications: ELISA, IHC

Recommended Dilutions: IHC: 25-50; ELISA: 5000-10000

Host Species: Rabbit

Clonality: Rabbit Polyclonal

Isotype: Immunogen-specific rabbit IgG

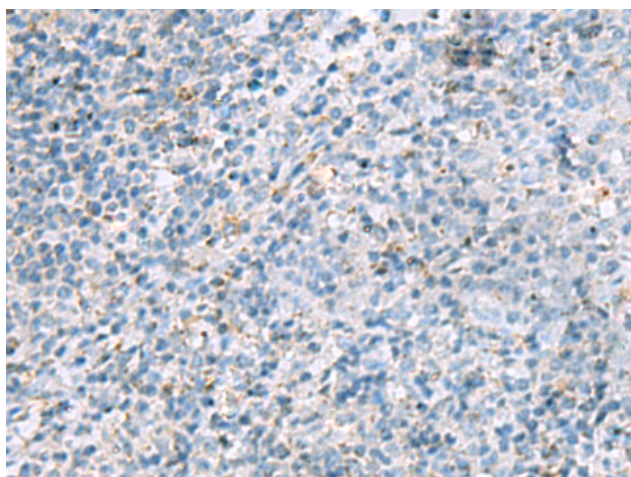
Purification: Antigen affinity purification

Species Reactivity: Human, Mouse, Rat

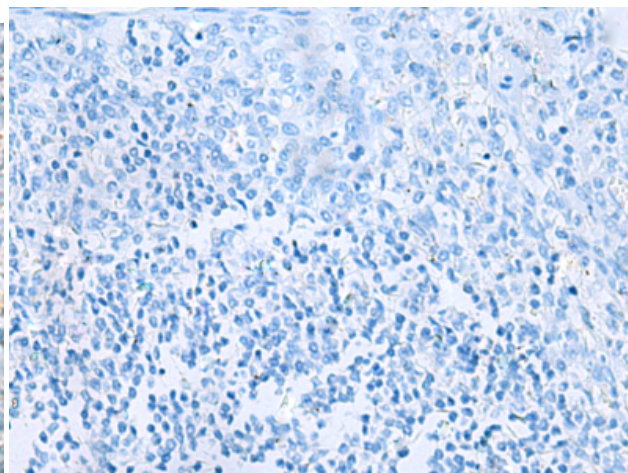
Constituents: PBS (without Mg²⁺ and Ca²⁺), pH 7.4, 150 mM NaCl, 0.05% Sodium Azide and 40% glycerol

Research Areas: Neuroscience

Storage & Shipping: Store at -20°C. Avoid repeated freezing and thawing



Immunohistochemistry analysis of paraffin embedded Human tonsil tissue using 221457(LRRC4 Antibody) at a dilution of 1/40(Cell membrane).



In comparison with the IHC on the left, the same paraffin-embedded Human tonsil tissue is first treated with the synthetic peptide and then with 221457(Anti-LRRC4 Antibody) at dilution 1/40.