

LSAMP RABBIT PAB

Cat.#: S218159

Product Name: Anti-LSAMP Rabbit Polyclonal Antibody

Synonyms: LAMP; IGLON3

UNIPROT ID: Q13449 (Gene Accession - BC033803)

Background: This gene encodes a member of the immunoglobulin LAMP, OBCAM and neurotrimin (IGLON) family of proteins. The encoded preproprotein is proteolytically processed to generate a neuronal surface glycoprotein. This protein may act as a selective homophilic adhesion molecule during axon guidance and neuronal growth in the developing limbic system. The encoded protein may also function as a tumor suppressor and may play a role in neuropsychiatric disorders. Alternative splicing results in multiple transcript variants, at least one of which encodes a preproprotein that is proteolytically processed.

Immunogen: Fusion protein of human LSAMP

Applications: ELISA, WB, IHC

Recommended Dilutions: IHC: 50-200;WB: 500-2000;ELISA: 5000-10000

Host Species: Rabbit

Clonality: Rabbit Polyclonal

Isotype: Immunogen-specific rabbit IgG

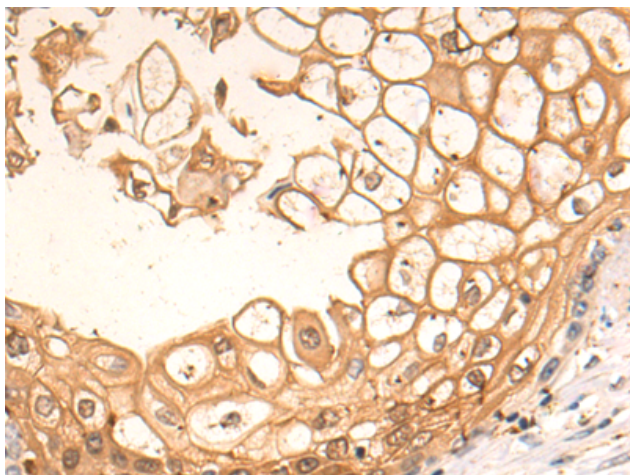
Purification: Antigen affinity purification

Species Reactivity: Human, Mouse, Rat

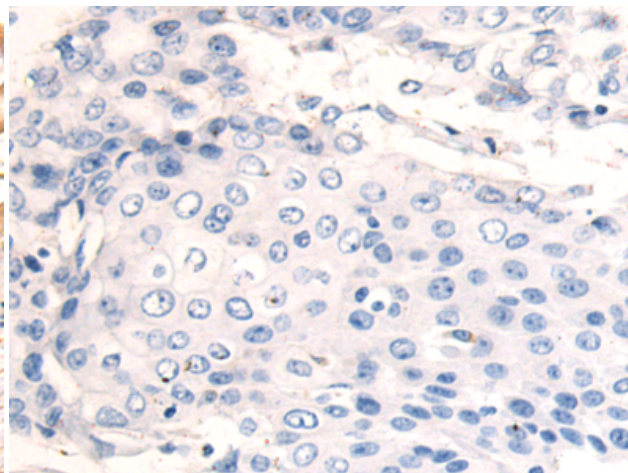
Constituents: PBS (without Mg²⁺ and Ca²⁺), pH 7.4, 150 mM NaCl, 0.05% Sodium Azide and 40% glycerol

Research Areas: Neuroscience

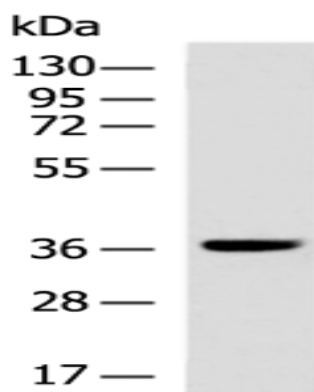
Storage & Shipping: Store at -20°C. Avoid repeated freezing and thawing



Immunohistochemistry analysis of paraffin embedded Human esophagus cancer tissue using 218159 (LSAMP Antibody) at a dilution of 1/70 (Cell membrane).



In comparison with the IHC on the left, the same paraffin-embedded Human esophagus cancer tissue is first treated with the fusion protein and then with 218159 (Anti-LSAMP Antibody) at dilution 1/70.



Gel: 8% SDS-PAGE, Lysate: 40 μ g;
Lane: A549 cell lysate;
Primary antibody: 218159 (LSAMP Antibody) at dilution 1/800;
Secondary antibody: HRP-conjugated Goat anti rabbit IgG at 1/5000 dilution;
Exposure time: 20 seconds